



The South Poll Grazier

Annual Magazine of the South Poll Grass Cattle Association

Volume 1, No. 1

2025





WELCOME TO OUR MAGAZINE!

By Teddy Gentry

The South Poll breed has grown at warp speed the last couple years for good reason. Gentle cattle designed to be foragers and take the southern heat and humidity. Blue collar cattle that don't need pampering to do what a cow should do. Provide her adequate opportunity to make a living off grass and the average South Poll will give you a calf on time every year for a long time.

These are not show cattle by any means but they will compete in the pasture (especially on fescue pastures) with about any other breed in my opinion.

Please support the seed stock breeders that keep good records of the past. This ensures the success of our breed in the future.

One thing I've learned is that extremes in the cattle business don't work. Let's continue to put the emphasis on money making traits for the commercial cattle person which has been, is and will be fertility and longevity!

Please enjoy our magazine and good cowing in the future!!

South Poll Grass Cattle Association Board Members

Dakota Blanks.....	434-942-5210
Rodney Cravens	417-464-7071
Doug Creech.....	256-572-6244
Devin Dean.....	256-996-2117
Paul Epting.....	864-630-0152
Josh Erickson, Secretary.....	816-719-5403
Ethan Foard	843-672-8993
Judy Freeman, Treasurer	417-254-0914
Teddy Gentry, President	256-996-0777
Nathan Hahn.....	502-354-1920
Troy Lohman	217-556-2066
Wesley O'Neal	770-206-0318
Dave Roberts.....	256-996-1788
Bruce Shanks, Vice President	573-578-3945
Becky Szarzynski Shaw	540-461-0969
Kathy McCart, SPGCA Secretary ..	256-996-3142



Kathy McCart, *Editor*
info@SouthPoll.com

Gail Hardy, *Graphic Designer*
gail@xpressionsonline.us

South Poll Grass Cattle Association

526 County Road 370 • Elba, AL 36323
 256-996-8355

Info@SouthPoll.com • <https://SouthPoll.com>

SPGCA Registry Office

Cattle Registration, Transfer, DNA, and Membership
 P.O. Box 260 • Kearney, MO 64060
 816-629-8010

Registry@SouthPoll.com

Advertising

2025 The South Poll Grazier Display Ad Prices & Publication Schedule

Ad Size	Cost - Color Ad
full page - - - - -	\$500
1/2 page - - - - -	\$300
1/4 page - - - - -	\$150
1/8 page (business card) - - - - -	\$75

The prices listed in the table above are for finished ad copy. It is the responsibility of each advertiser to either produce the final copy themselves or contract for that.

The South Poll Grazier Publication Schedule

	2026
Display Ad commitment due	
to Xpressions (inc. ad size) - - - - -	Apr 1
Article Deadline to Operations - - - - -	Apr 1
Display Ad Content Due to Xpressions - - -	Apr 13
Ship Date to Operations - - - - -	May 29

Grazier Display Advertising specs & booking info. contact

Gail Hardy at Xpressions, Graphics Specialists,
 479-439-0726

gail@xpressionsonline.us • <https://xpressionsonline.us>

Ad design is available from Xpressions.

INSIDE THIS ISSUE



ARTICLES

South Poll Cattle: Optimizing Grass-Fed Efficiency in Challenging Times.....	8
Building a Cow Herd with Beefmaster and South Poll Genetics	14
Learn to Resist Extremes – the KISS System	22

HISTORY

South Poll Legacy -- Quarter Century in SP Business	4
Letter to Teddy Gentry from Jerry Voss, 2007	6
History of the South Poll Breed	26

SPGCA ASSOCIATION INFORMATION

Welcome to our Magazine!.....	inside front cover
Blanks donation to the Youth Program	5
Gentry donation to the Youth Program	7
White donation to the Youth Scholarship Fund.....	15
2024 Field Day Recap	19
SPGCA Crisis Fund	21
SPGCA Reminders.....	25
SPGCA Rules And Regulations.....	30
SPGCA Online Registry — Your Comprehensive Resource to the South Poll Cattle Registry	31
DNA Information	34
SPGCA Registry Report	34
DNA Submission - Neogen Instructions	36

SPGCA BUSINESS

SPGCA Board Members.....	inside front cover
2025 The South Poll Grazier Display Ad Prices & Publication Schedule	1
SPGCA Youth Scholarship Announced	18
The Next Generation Speaks: Reflections from the 2024 Jr. Speaking Contest	18
2024 SPGCA Scholarship Winners	18
2025 SPGCA Photo Contest Winners Announced	22
South Poll Photo Contest – Give Us Your Best Shot!	22
2025 SPGCA Board Meeting Recap	25
South Poll Grass Cattle Association Members	42
Advertisers Index (listed alphabetically)	53

Cover: First Place 2025 SPGCA Photo Contest, photograph by Judy Freeman, Hartville, MO

Pictured Above: Photograph by Nathan Hahn, Harrodsburg, KY

Back Cover: Second Place 2025 SPGCA Photo Contest, photograph by Judy Freeman, Hartville, MO



Teddy and Linda Gentry
256-996-0777

Josh Gentry
256-304-4605

Dave Roberts
256-996-1788

Semen for sale on over 20 South Poll Bulls. Contact Dave.



Moonlight Meadows

*South Poll Grass Cattle &
Royal White Sired St Croix and Katahdin Sheep*

Bob & Pat Zogorski
Lancaster, PA

moonlight-meadows.com
(717) 689-0360

WOODS FORK CATTLE CO. LLC

1171 Woods Fork Rd, Hartville, MO 65667

JUDY FREEMAN
417-254-0914

STEVE FREEMAN
417-254-0913

OUR COWS ARE:

- Adapted to the heat, humidity, and fescue of Southern Missouri
- Raised with a system whereby nature selects the females best suited to thrive in these conditions
- Expected to breed in July & August to calve at 23-24 months of age, and every 365 days thereafter
- Given just 45 days to conceive, while avoiding inputs like grain or protein/energy supplements

South Poll Legacy -- Quarter Century in SP Business

By Ralph Voss

A quarter of a century seems like a long time, but in the South Poll business a quarter century ago seems like yesterday.

In late August or early September of 2003, Jerry and I had an opportunity to add 20 Red Angus cows to our herd. A guy named Greg Judy from Clark, MO, had those 20 cows for sale because he was in the throes of a horrible drought.

We bought those cows, but while we were looking at the cows he had for sale, we spotted another set of cattle Greg had in a nearby field. He explained that this set of cattle were South Polls, a new breed of cattle developed in Alabama by Teddy Gentry, a member of the Alabama country music group. Even though we tried our best, Greg wouldn't part with any of those 20 South Polls he had just purchased from Teddy two weeks earlier, so we did the next best thing we could think of. We made preparations to go to Alabama to buy South Polls from Teddy.

Two weeks after we first learned about South Polls, we were on top of Lookout Mountain, rolling into Bent Tree Farms, where we met Teddy and Dave Roberts, Teddy's long-time herdsman. Teddy was sitting in a rocking chair. Dave was wearing his usual SEG smile, while Teddy explained what he was trying to accomplish with South Polls. Teddy didn't need to sell us; we were already impressed with his cattle.

Teddy couldn't stay long. The band had a concert coming up and the bus would be leaving soon. By this time Alabama had 41 No. 1 hits to their credit and spent a lot of time on the road. We were to learn later that one year the band spent every night on the road, except for 29 nights.

With Teddy's departure, Dave gave us a great tour. We got to look at their best cows and bulls. And it



Jerry & Ralph Voss

was a treat. Their bulls had much in common. They were all wide and deep, but none were very tall and while some of the bulls may have weighed 1500 pounds, hardly any weighed much more than that. The cows were different. Most were first generation, which means they were the first females to be fullbloods, with each being one-fourth Angus (mostly red), one-fourth Hereford, one-fourth Senepol and one-fourth Barzona. With the heterosis from the cross breeding, most first-generation cows were large – 1500 pounds being very common. It was also common to take three generations to get the offspring of these first cows down to a desirable size.

On that first trip we bought five cows and two bulls. We did not select the cows. They were to come from the herd that included some of their best cows that had been artificially inseminated or implanted with an embryo. We were to receive five cows that did not stick. We felt lucky to get that deep into their gene pool. One of the five cows was B0406, who turned out to be a super cow. She made it to 17. We still have one of her daughters.

Our seven head were delivered by a man who had a business of delivering registered cattle to breeders all over the country. He rolled into Linn at 2 am on a miserably cold night in December, dropped off the cattle and we were officially South Poll breeders. One of

the bulls, H10 was especially short. As a man who at one time liked a frame 7 bull that weighed a ton, I asked myself if this was a good move. When we saw H10's first calves, there was no doubt we had made a great decision. His calves sparkled. We could pick them out 50 yards away. We made one serious mistake. We used H10 on our Angus cows and the other bull – M419 – on our South Poll cows.

We greatly enjoyed showing off our South Polls and we continued to buy cattle from Bent Tree. One of the times we went to Fort Payne we ran into Teddy, and he mentioned that he would be willing to come to Linn to speak at an open house or field day event. In the fall of 2007, we invited VoAg students from four area high schools to come to Linn to hear Teddy talk. It turned out to be a big deal. Teddy explained how and why he developed the breed. Greg Judy came and asked to say a few words and impressed all of us. Nobody had heard of Greg in those days, but that didn't stay that way for long. Greg offered to give the kids a tour of his operation, showing not only the cows, but how he grazed. Within a month we had rented a school bus and took a bunch of those kids to Greg's.

That 2007 event was significant in a number of ways. It showed Teddy's star power. A lot of those students came initially, not because they were interested in Teddy or the cattle, but because their teachers grew up listening to Alabama and this gave them an opportunity to meet a bonafide star. Teddy couldn't have been more gracious. I told you about Greg Judy. He sparkled. Another important part of the story is Bruce Shanks. We ran an ad in the Stockman GrassFarmer and Bruce saw

CONTINUED ON PAGE 5

the ad, noticed the 573 area code and gave me a call. Bruce was excited about attending, liked what he saw and has played a big role in South Polls since that time.

Another watershed event associated with that meeting occurred after the students came to our farm to see the cows. We had our entire herd in one relatively small paddock shaped like a piece of pie. The cows were in the downhill portion of the paddock, which also happened to be the narrow point of the paddock. Teddy was speaking to the students and the rest of us just outside the paddock on the upper end of the paddock. The students were anxious to get in with the cows. When Teddy stopped talking, the kids crossed the polywire and stormed down the hill some 75 to 100 yards toward the cattle. Most of the adults there had visions of a catastrophe, with the cattle spooking and running all over that end of the county. Nothing of the sort happened. The cows actually approached the students as the students were approaching them. The cows walked through the mob of students, appearing as pleased to see the students as the students were pleased to see them. There was no way we could have orchestrated a better way to show off the great disposition of South Poll cows.

A friend of ours who came to the farm gave a great description

of the cows. They were “almost scary circus tame.”

There is one more aspect of that day that has special significance. As the crowd was coming into the community center that morning Teddy watched as Jerry registered the names of those in attendance, both students and teachers, but also others who attended because they saw our ads. Teddy then told Jerry, “Save those, Miss Jerry, I might want to start an association some day.”



Jerry pondered that statement for a week or two and then wrote him a lengthy letter advising him to start an organization and gave a step-by-step plan as to how she thought it should be done. Jerry sat on that letter for two or three weeks before sending it. Finally, she sent it and we heard nothing for months. The following spring, only two or three weeks prior to May 17, 2008, Dave Roberts called to let us know Teddy was starting an association, and that the first

meeting was going to be held May 17, 2008. We attended that meeting, along with about 20 others. It was decided to form an organization, a board of directors was chosen and officers elected.

The officers chosen were Teddy Gentry, president; Greg Judy, vice president; Jerry Voss, secretary and Toyah McGrady, treasurer. Other board members were Tom McGrady of Texas, Steve Hampton of Kentucky, John Eldridge of Georgia, Ralph Voss of Missouri, J.A. Girgenti of Louisiana, Cliff White of Florida, Todd Thompson of Illinois, John Lyons of Alabama and Bruce Shanks of Missouri.

At that 2008 meeting Teddy said something that caught the attention of both Jerry and me. “I believe the Lord has blessed us,” he said. “South Polls are better meat-wise than I even thought they would be going in.”

Teddy is right. The Lord has blessed us with an exceptional breed. We need to be aware and to appreciate how much Teddy has helped not only South Poll owners but those who will consume South Poll beef and those who will benefit from the environmentally friendly way most South Polls are raised. South Poll breeders can be proud of what we have achieved. The breed is much better today than it was 25 years ago. We need to make sure that in 25 years, the breed is much better than today.



Ruth and Dakota Blanks, Windy Acres Farm, donated a heifer to the SPGCA Youth Program at the 2024 Field Day. Each junior member that participated in the 2024 Junior Speaking Contest was entered in the drawing. Charlie Mulheran, Taft, TN was the winner of the heifer.

Letter to Teddy Gentry from Jerry Voss, 2007

Teddy:

When you were here we talked about the possibility of forming a South Poll Association.

I think that's a good idea because all of us who are passionate about the South Poll breed are not youngsters. When we quit working on it the breed will die with us, unless we do something now to make it a viable and lasting operation.

What I would suggest is this. I would begin by having you pull together a comprehensive list of all people who have bought South Polls from you or have acquired them from other sources. Then I think you should host a formation meeting, possibly this spring, summer or fall at your farm in Ft. Payne, and invite those people.

House as many of them as possible at or near your farm. They need to feel that they are part of a very important project and take ownership interest in it. The rest can stay at one of the hotels in Ft. Payne. Possibly everybody should stay in Ft. Payne so that no one feels that you prefer some over the others. No jealousy. But I do think the meetings and a dinner should be hosted at the farm by you.

You would explain the need for setting up the association and the structure that you have in mind for it. I think there should be newsletters on a regular basis, quarterly or whatever, to keep people interested.

We should hold a yearly show-and-tell meeting at individual member's farms, somewhat similar to what we had here at Linn, to learn what others are doing and to keep interest in the breed.

You could write a column in the newsletter and also the person hosting the annual show-and-tell meeting could do an article. I would also get a young person who is starting in the breed to do an article on questions or problems

he might be having.

We might also have a general section that has breeders telling about situations they encounter and others responding to those concerns in the next newsletter.

Ralph and I have talked about this and we would be willing to set-up and edit the newsletter and even pay for it for the first year. We would probably want the association to pay for the postage to mail it, however.



Teddy Gentry and Jerry Voss

We should consider setting up some sort of award offered by the association to young people who show a particular interest in the breed. Possibly that could be an award of a really top heifer that is bred to a super bull, just to get a young person started. The award could be made at the annual meeting, theoretically to a Vo-Ag person from one of the schools that attends the annual conference. Maybe we could do some sort of essay contest on why raising South Polls is such a good idea. We'll actually have to get them interested in raising South Polls first though.

At the annual meeting we should get Vo-Ag classes and farm kids from the area where the meeting is held to attend like we

did at our dinner. Some of those kids are genuinely interested and that's what we will need to carry on the breed. We have found out since our meeting that a school 40 miles away from here was sorry that they were not included. We would have been glad to include them if only we had known.

We can also contact local newspapers and farm cooperative publications in the areas of the annual meeting to try to get some publicity that way. I have enclosed copies of the articles that were done by the two of the publications that I had at your meeting here. The statewide publication for the rural electric cooperatives will come out soon and I'll get that to you as well.

We would have to collect some sort of stipend from the forming members to do the work that needs to be done, possibly as much as \$1,000 from original forming members on a one-time basis. Maybe we could have a sort of tier membership to accommodate those who can pay more and those who cannot afford much, but we do want to include everyone.

Officers would have to be chosen. I think you should be president because you are synonymous with the breed itself. Ralph likes to talk to people so perhaps he could be the secretary-treasurer. Another reason I think that might be good is because he has legal experience and could possibly oversee the legal incorporation of the association, so that we don't get screwed legally somewhere down the road.

Maybe the vice president could be someone you choose that is as passionate about the breed as we are and brings a little star power (Greg Judy??) or credibility to the group. We could try to spread the officers out geographically if you want to.

CONTINUED ON PAGE 7

The secretary will be in charge of taking care of the registration papers of the breed and that would work for Ralph also because we have a lady who presently works for me at the newspaper who is extremely interested in animal genetics and already understands what is needed. I think you met her when you were here; she is the lady who provided the free-range eggs for our breakfast.

I envision the registration papers going out in a timely fashion and if I could keep the paperwork here I can make sure Nancy gets it done on time. She's almost anal about that stuff anyway and I could have her do it at the paper so I could keep an eye on it.

We have heard nothing but good comments about the meeting. People continue to stop us on the street or call and thank us for hosting it. They were particularly interested in what you had to say. They were fully aware of your country music star status and were amazed at your down-home "what-you-see-is-what-you-get" attitude. They really liked you, and the kids, I have heard from many of the parents, are truly interested in the grass-fed philosophy.

They were also terribly inter-

ested in the high density stock grazing concept that Greg Judy presented. Greg is so much more articulate now than he was a year ago it is amazing. He continues to impress me. He also is just plain good people and has taken Ralph up on the offer to have the kids to his farm to look at his grazing methods, and was delighted to do so.

With the price of fertilizer going up drastically, more and more people are going to be interested in intensive grazing and grass-fed beef. We just need to capture that interest and get them in our corner.

The kids that attended the program here are really pumped about what they heard and saw Thursday. That's what we don't want to lose. They, along with the adults, were particularly impressed with the gentleness of the cattle and have associated that with the breed itself.

A stockbroker friend of ours, Dave Luker, who was at the meeting, described the cattle as "almost scary circus tame." He said he realized that the cattle were familiar with Ralph and would be gentle around him, but was "blown away" when cows came up to me and licked my hands and

were nuzzling me. When the kids realized the cows weren't going to kill me was when they felt confident enough to approach them. Little do they know, I sometimes carry a pocket full of range cubes and feed them.

You said that you felt that many observers thought that a musician could only think of or be good at one thing. You knew that you were, in fact, good at both things. You were right. You have already formed your legacy as a country music star. In my opinion the formation of a South Poll association that allows for the continuation and growth of the breed that you love will allow you to leave a good legacy in two fields.

Tell me what you think. I believe this will be a lot of work and will take a ton of promoting for all of us, but I think it could certainly be a worthwhile endeavor. Securing the breed by way of an official association will make all our cattle more valuable and would ensure that they continue on long after most of us do.

We are willing to help plan or participate in anything you choose to do. We believe in the breed and we believe in what you and Dave are doing.

Jerry Voss



Teddy Gentry, Bent Tree Farms in Fort Payne, AL donated a heifer to the SPGCA Youth Program at the 2024 Field Day. The winner of the drawing was Kaylee Adams, Munford, AL

South Poll Cattle: Optimizing Grass-Fed Efficiency in Challenging Times

By Becky Szarzynski Shaw

A new breed is transforming the cattle industry in our southern American pastures. Ranchers wanting to balance profitability, sustainability, and efficiency are increasingly turning to South Poll Grass cattle, a breed developed to thrive on grass alone. More than just red-hided cattle, South Polls represent a revolution in ranching, one that prioritizes grass-based efficiency, economic resilience, and adaptability in a time of mounting industry challenges.

2025 CHALLENGES THAT FARMERS ARE FACING

Today, farmers and ranchers are facing unique hurdles that ask us to be more innovative, sustainable, and efficient than ever before. Our grazing businesses need to consider both economic and ecological aspects if we expect to hand a vital farm business to the next generation. Here are just a few of the top challenges we are fronting in 2025:

- **U.S. cow herd numbers** have fallen to their lowest levels in over 60 years, leading to reduced cattle supply and high prices.
- **Inflation/Production costs (feed, equipment, and labor) continue to rise**, pressuring profit margins and widening the gap between historical prices and today's economic reality.
- **Land prices have skyrocketed**, making it difficult for farmers and ranchers to produce enough per acre to cover costs.
- **The average U.S. farmer is now 60 years old**, raising concerns about farm succession and operational sustainability.
- **Urban sprawl is shrinking agricultural land**, forcing ranchers to farm and optimize

smaller acreage.

THE VISION BEHIND SOUTH POLL CATTLE

The South Poll breed owes its creation to Teddy Gentry, the bassist from the legendary country group Alabama. In 1989, he recognized a critical need: cattle ranchers in the South lacked a breed that could excel in high temperatures, humidity, and marginal forage while still producing tender, high-quality beef.

At the same time, the industry had shifted toward larger-framed cattle, but data from Integrated Resource Management (IRM) studies revealed that smaller cows were far more efficient at converting grass into income. Recognizing this overlooked advantage, Gentry pursued a composite breed that would break away from the status quo. By carefully blending Hereford, Red Angus, Senepol, and Barzona genetics, he developed South Poll cattle, an animal tailored to diverse grazing systems across the country.



HOW SOUTH POLLS MEET TODAY'S RANCHING CHALLENGES

1. **Lower Input Costs Amid Rising Production Expenses** - As feed and equipment costs climb, profitability hinges on minimizing inputs. South Polls maintain body condition on grass alone, eliminating the need for costly grain supplementation.
2. **Smarter Land Use in a Time of Record High Prices and Urban Sprawl** - With land values



soaring and shrinking available grazing land, ranchers and farmers must make every acre count. South Poll cattle optimize profitability per acre with managed grazing practices and their average body size of a 1,000 pound cow, which is ideal for grass-based farming operations. In turn producing more marketable beef with fewer land resources.

3. **A Solution for an Aging Producer Base** - As the average farmer nears retirement age, the demand for low-maintenance, efficient cattle increases. South Polls offer easy-handling and docile temperament, simplifying operations for ranchers looking to extend their careers or transition land to new generations.

BUILT FOR PROFITABILITY & SUSTAINABILITY

South Poll cattle are designed for longevity, producing calves for 10 to 12 years, but commonly farther into their mid to late teens, which is far beyond the industry average. Their heat-adaptive red coat and slick hair allow them to breed back, milk efficiently, and perform in hot and humid environments.

They also exceed expectations in meat quality. Research from Colorado State University confirms that South Poll beef is as tender, if not more tender, than traditional English breeds, meeting consumer demand for high-quality, grass-fed beef.

THE FUTURE OF GRASS-BASED CATTLE RANCHING

While the term "Managed

CONTINUED ON PAGE 9

Grazing”, “Rotational Grazing” or “Regenerative Grazing” may be new to a lot of us, the actual practice is really as old as the natural relationship between grazers and grasslands. As what was old becomes new again, the results of these grazing practices can be different than years past, due to advancements in fencing technologies, new livestock breeds, and a deeper scientific understanding of how plants, soils, and ruminants interact in these grazing systems. As managed grazing gains momentum, South Poll cattle are proving to be an ideal fit for these carefully stewarded grasslands. Their moderate size not only lowers forage demand and reduces soil compaction but also translates to lower overall input costs. These cattle are efficient, adaptable, and bred to thrive on forage-based diets,

meaning they do more with less, without sacrificing productivity or meat quality.

John Lyons, of J-Jank Farms, underscores the breed’s economic impact: *“Inputs are the key to making a profit, and South Polls keep those inputs minimal. These cattle do the most on the least of any breed I’ve ever seen.”*

At a time when ranchers must balance economic survival with land stewardship, South Polls offer both, economic resilience and environmental respect. By thriving on grass, maximizing fertility, and maintaining efficiency without artificial inputs, they provide a model for future-focused cattle operations.

A BREED BUILT FOR THE LONG HAUL

South Poll cattle aren’t just a passing trend, they’re a strat-

egy for navigating modern ranching challenges. With profitability, adaptability, and sustainability at their core, they offer ranchers a proven path toward long-term success.

When the industry demands doing more with less, South Polls answer the call, delivering efficiency on the pasture and excellence on the plate.



Visit our website <https://southpoll.com> for useful information



The Shanks Family
Belle, MO

www.sassafrasvalleyranch.com | (573) 578-3945

We know and understand the cattle industry and have the genetics to simplify your operation. We raise gentle, easy-fleshing, moderate-sized South Poll cattle that are selected on fescue for fertility, hardiness, and longevity. "Mother Nature" is our best genetic selection tool!

We are truly a low-input operation. Our cattle are raised on forage, hay, and mineral with no additional inputs!

Heifers are managed like cows; No second chances for any females!

We have thriving steer sales to grass-finishers. Only top bulls make the cut!



Bulls | Heifers | Semen | Steers for Grass-Finishers | Katahdin Sheep
Delivery Available! Call or Visit Anytime!



Holiday Ranch South Polls, LLC

Unmistakable Quality since 2004

Alabama • Florida • Missouri • North Carolina

Cliff and Kay White

SouthPolls.com

850• 260• 1071



Smoky Mountain South Polls

Mike & Susan Clark 865-389-5699
Tyler Martin 423-754-0191
Tristan Tilley 256-997-7383

**SEE US AT THE SOUTHERN SELECT CATTLE SALE
DECEMBER 5, 2025 AT LAUREN'S LIVESTOCK,
LAUREN'S, SC**



We are committed to improving the quality of our genetics every day through careful selection, strategic artificial insemination using the breed's best bulls, the purchase of top-quality sires, and comprehensive DNA testing of all our animals — all with the goal of producing some of the best South Poll cattle in the breed.



VIRGINIA SOUTH POLL CATTLE SALE & GATHERING



October 11, 2025 | 8am-2pm

**Cattle Viewing | Vendors
Producer Panel | Free Lunch
Cattle Sale**



Windy Acres Farm
Appomattox, VA 24522

**12:30 PM
SALE**

**Registered Fullbloods,
Purebreds and
Percentage Females,
Pairs & Bulls**

FREE!

But registration required.



SOUTHPOLLSALE.COM



Building a Cow Herd with Beefmaster and South Poll Genetics

By Steve Freeman

reprint of an article from
2012

Years ago I found a book entitled "The Lasater Philosophy of Cattle Breeding" by Laurence Lasater. It was a real eye opener for Judy and me, and the guidelines from this book have been the backbone of our cattle breeding program during the last couple of decades. Tom Lasater, the founder of Beefmasters, believed you could take the guesswork out of cattle breeding by requiring your breeding stock to accomplish some simple, but tough goals. In a nutshell, every cow must raise an acceptable calf and breed back every year in a defined breeding season, while grazing the grasses that grow naturally on your ranch with little or no outside inputs. No exceptions. If she doesn't produce one year out of ten, she is off to town. Simple plan, but very hard to follow. Even though Lasater developed and bred Beefmaster cattle, the philosophy can be applied to any breed.

We have used Beefmaster bulls from the Lasater foundation herd for years now, and while we like the cattle, there were still some changes we wanted in the herd that would either take years, or perhaps a lifetime, to accomplish. One, was a polled animal.

Lasater, rightly so, said it was so difficult to breed animals to fit the simple but tough parameters he used for selecting replacement cows, that you should not add extra traits such as color and polled to the selection process. That said, we still do not like horns or dehorning and wanted to add the polled trait to the cow herd by using polled bulls. We had tried Red Angus bulls to develop a crossbreed that would give us the polled trait, but found both the bulls and the crossbred calves unable to fit



Judy & Steve Freeman

in our grazing system. We move cows every day and many of our paddocks do not have shade. We also have several grazing paddocks that have very highly endophyte infected fescue, which adds about 10 degrees to a hot day for cattle affected by the endophyte. Though there are many good Angus breeders, even the best will usually tell you that if you are breeding in July and August in the fescue belt, their bulls will probably not work. They simply get too hot. We turn bulls in July 4th for a 45-60 day breeding season and never had an Angus bull make it all the way through the breeding season without falling out.

Another trait we were looking for was moderation in cow size. While many of our Beefmaster cross cows are in the 1100-1200 pound range, we would always have some that topped the scales at 1400-1500 pounds. Since we don't supplement our cattle, size has never been that big a concern to us, but we envision, some day, a larger commercial market for grass fed beef and wanted to have cows that would raise calves that could go either way – to the traditional feedlot or to the grass finisher. Finding a breed that would add these traits but allow us to retain the heat tolerance,

early maturity and adaptability of the Beefmaster cows was tough. Then one day, about seven years ago, Judy read an ad that listed South Poll bulls for sale.

There are many composites in the cattle world, but most seem to be trying to accomplish the same thing. They combine English maternal breeds with Continental terminal breeds to produce a cow that combines characteristics of both breeds and allows the use of one bull to produce good replacement females and fast-growing steers for the feedlot. While the merits of these composites can be debated, one thing I believe is that once you get past hybrid vigor and begin reproducing the crosses to stamp the breed, you will have tradeoffs.

Faster growth – less fertility and late maturity. Too much milk – less fertility and harder keeping.



Photograph by Judy Freeman

A friend of mine who breeds some of the best maternal, fertile Red Angus in the business said he's always breeding for average. If you go past average in one trait, you give up something in another trait.

The South Polls, on the other hand, are not looking to compete with terminal/in growth, but to

CONTINUED ON PAGE 15

compete with Angus in the hot, humid regions where maternal, non Bos-Indicus cattle often fail to reproduce at an economical rate. South Polls are a fairly new breed, developed by Teddy Gentry, combining Barzona/Herefords with Senepol/Red Angus genetics to produce a heat tolerant, moderate-sized, polled Bos-Taurus mama cow for the south. They are not going to grow faster than a Charolais or a Gelbvieh, but they are going to breed back in a hot humid climate while raising a good calf on nothing but grass.

Though the numbers are still small, the breed is growing fairly quickly. While the breed originated in Alabama, Missouri seems to be a hot bed for South Polls, as they fit our climate and are able to tolerate endophyte-infected fescue well. They have been developed with the grass finisher in mind and the growing popularity of grass finished beef has also helped to fuel demand for South Poll calves. At a recent South Poll Grass Cattle field day, I was amazed by the number of breeders who sell the majority of their cattle as grass-fattened beef directly to the consumer.

After seeing the ad for South

Polls, Judy and I went to see the bulls for sale and had the pleasure of seeing a beautiful herd of functional cows. We were surprised at the consistency of the cows. Be-



Photograph by Judy Freeman

ing composites, we expected to see quite a bit of variance within the herd and were very pleased to see they were almost "peas in a pod." We bought three bulls and so added South Polls to our Beefmaster bull battery to eliminate horns, but retain the heat tolerance, othering and grazing ability of our cattle. Since that day seven years ago, we have continued to add South Poll bulls and as our Beefmaster bulls leave the battery, they are being replaced by South Polls. We are now using nine South Poll bulls and have just three remaining Beefmaster bulls.

One trait we have emphasized besides fertility is disposition, and this is a trait where the South Polls really shine! We ship cattle for poor disposition and have a gentle herd, but we were very pleased and surprised with the gentleness of the South Polls.

While Beefmasters don't throw large calves, we have found that breeding our heifers to South Poll bulls almost eliminates the need to check our two-year-olds during calving season. This year we calved fifty 22-24 month old heifers and didn't pull any of them. The calves are extremely quick to their feet and to the teat.

Breeding cattle always has a bit of dreaming and imagination to go with the practical considerations. We envision a herd of red, polled, moderate-sized cows with that "peas in a pod" look, that can withstand the sub-zero temperatures of winter, yet are able to breed back in the heat and humidity of our Missouri summers and provide us with a good marketable calf. And do it all with little or no outside inputs. Not only do we envision this herd, we know that it is necessary in order to make a profit in the years ahead.



Holiday Ranch proudly supports the SPGCA Youth Scholarship Fund with a South Poll donation

Cliff and Kay White, Holiday Ranch, located in Vernon, FL donated a South Poll Heifer to the 2024 SPGCA Field Day cattle auction. The heifer sold for \$5,000 in which the proceeds were donated to the SPGCA Youth Scholarship Fund.

Southern Select South Poll Cattle Sale

The Deep South's Premier South Poll Cattle Sale

December 5-6, 2025

**Laurens Livestock
2500 Hwy 49
Laurens, SC 29360**

We are proud to offer select South Poll cattle from some of the best producers in the country.

This is a great opportunity for seedstock producers, commercial operators, and anyone looking to improve their herd quality with registered genetics. Please visit our website for more information and connect with us on Facebook.



www.southernselectcattle.com



HEALTHY
SOIL

HEALTHY
GRASS

HEALTHY
CATTLE



FINEST
QUALITY
SOUTH POLL
STOCK

GWYN
FARMS

ZEBULON, GA



SONNY GWYN
770-468-0913
SONNY@GWYNFARMS.COM

RUSTY GWYN
770-584-5975
RUSTYGWYN@GMAIL.COM



South Poll Grass Cattle Association Youth Scholarship Announced

To help some worthy student achieve his/her academic and career goals, the Board of Directors of the South Poll Grass Cattle Association is proud to announce the SPGCA Youth Education Scholarship. The SPGCA Scholarship is designed to incentivize Junior Members of the SPGCA interest and education in agriculture.

Teddy Gentry, founder and president of South Poll cattle and the SPGCA has ecstatically proclaimed numerous times that youth are the most important product of family farms and the future of the industry and our organization.

The scholarship is valued at \$1000 and will be awarded to the winning student based on their

application, essay submission, and recommendation from their principal or counselor. The essay asks applicants to outline their intended major, career goals, and future involvement with South Poll cattle.

Students that are Junior members of SPGCA in good standing, have completed their senior year of high school (by the time the field day is held), and are committed to any college or university (including community college for first two years) in the United States are eligible for the scholarship.

The deadline for applications is April 1 with the award to be announced and presented at the SPGCA Annual Field Day held in September.

The Next Generation Speaks: Reflections from the 2024 Jr. Speaking Contest

The 2024 South Poll Grass Cattle Association (SPGCA) Junior Speaking Contest brought youthful energy and insight at last year's 16th Annual Field Day and Cattle Auction, held September 20–21 at Windy Acres Farm in Appomattox, Virginia. Hosted by Dakota and Ruth Blanks, the event showcased the next generation of land stewards, drawing young participants from across three age groups to share their perspectives on cattle and farm life.

Topics ranged from general cattle and farming themes for the youngest speakers, to discussions of South Poll benefits and winter herd management for older age divisions. In the under 8 years of age category, Charlie Malheran took first, followed by Carson Blanks. Among the 9 - 13 year olds, Nora Daugherty earned first place, with Rayley Lachney (2nd) and Evelyn Mulheran (3rd) rounding out the top three.

For the senior division, ages 14 - 18 years old, Addison McKechnie claimed first place, followed by Gavin Massey (2nd) and Kaylee Adams (3rd). Winners received cash prizes of \$250 for 1st, \$150 for 2nd, and \$100 for 3rd. Lastly, \$50 was awarded to each participant who didn't place but entered and spoke during the contest.



2024 SPGCA Scholarship Winners

The SPGCA would like to congratulate the 2024 SPGCA Youth Scholarship winners. They each received a \$1,000 scholarship.

The winners are:

Grant Culver, Hartville, MO

Noah Sumners, Albertville, AL



*Grant Culver
Hartville, MO*



*Noah Sumners
Albertville, AL*

We would like to thank all who participated and recognize not just their speaking skills, but for the thoughtful, practical ideas they shared with our South Poll community committed to regenerative agriculture and sustainable future.

We look forward to hearing what bright ideas the 2025 contestants bring to the Annual Field Day in Arkansas!

2024 Field Day Recap



On September 20-21 2024, the South Poll Grass Cattle Association hosted the 16th Annual Field Day and Cattle Auction. The host farm was Windy Acres Farm in Appomattox, Virginia, owned by Dakota and Ruth Blanks. The event aims to bring together seasoned and new South Poll cattle producers to network and gain education from expert speakers and fellow breeders.

The keynote speaker was grazing expert and author Jim Gerrish. Jim talked about what really matters in grazing management. Other speakers and breakout topics included: Jordan Thomas who covered the basics of artificial insemination and cow-calf profits. Tyler Martin and Gene Robins helped to identify types of common forages. South Poll cattle were evaluated by Bruce Shanks and Dave Roberts. Dakota Blanks evaluated the quality of some hay samples and discussed how to interpret a hay test.

There were 437 attendees from 20 different states that attended the field day.

When not listening to speakers, attendees enjoyed visiting the gentle herd of cattle, conversing in the shade of old oak trees, and placing bids on silent auction items and visiting vendors. Some attendees even made time to visit the historic town of Appomattox and Appomattox Court House National Historical Park. The younger guests enjoyed face-painting, lawn games, and most of all playing in the woods adjacent to the main tents. This was evidenced by the impressive forts left behind!

Other highlights of the weekend included the Jr. Speaking contests in which eighteen youth participated. The first place winners in the three different age groups included: Charlie Mulheran, Nora Daugherty, Addison McKechnie.



The event concluded with the cattle auction, in which consignors are encouraged to bring the best of the breed.

	Total	# Lots	Average
Cow Calf Pairs	\$51,200	8	\$6,400
Bred Heifers	\$75,500	13	\$5,808
Open Heifers	\$24,200	5	\$4,840
Bulls	\$45,500	5	\$9,100
TOTAL	\$196,400	31	\$6,335



The SPGCA and hosts hope that everyone went home feeling renewed about their herd and grazing goals and more connected to other producers.

PCC OH HEAT SEEKER



SASSAFRAS VALLEY RANCH BULL



"For all the animals of the forest are mine, and
I own the cattle on a thousand hills." Psalms 50:10



Honnas Land & Cattle Co

Cliff and Lorie Honnas | Bryan, Texas
979-255-2132 | Southpollcows@gmail.com

SPGCA Crisis Fund

The mission of The South Poll Grass Cattle (SPGCA) Crisis Fund is to assist South Poll members and their immediate family who are in need due to severe illness, injury, an accident, disaster, or death. This crisis fund falls under and is overseen by the South Poll Grass Cattle Association.

To be eligible for assistance, an applicant must be a SPGCA member in good standing. However, in the case of a deceased member meeting the foregoing requirements, then an application may be made by a surviving spouse. Crisis fund requests can also be submitted by a fellow SPGCA member who wants to apply for aid to be sent to the SPGCA member in need. SPGCA members should encourage fellow members in need to apply.

The crisis aid is not intended to relieve a member's financial distress, but to grant some relief and show support from SPGCA. If an applicant meets the eligibility requirements, \$200 per calendar year per household will be granted.

APPLICATION / REVIEW PROCESS / CRITERIA:

1. Applicant applies to SPGCA for crisis funds, or a fellow SPGCA member can request and fill out an application for the SPGCA member in need. Cases will be reviewed by the SPGCA Crisis Fund Committee.
2. The Applicant's name will be kept confidential to protect the privacy of the applicant.
3. Application evaluation:
 - The nature and severity of illness, injury, accident, or disaster.

- The ability to do work to support the recipient and/or recipient's family.

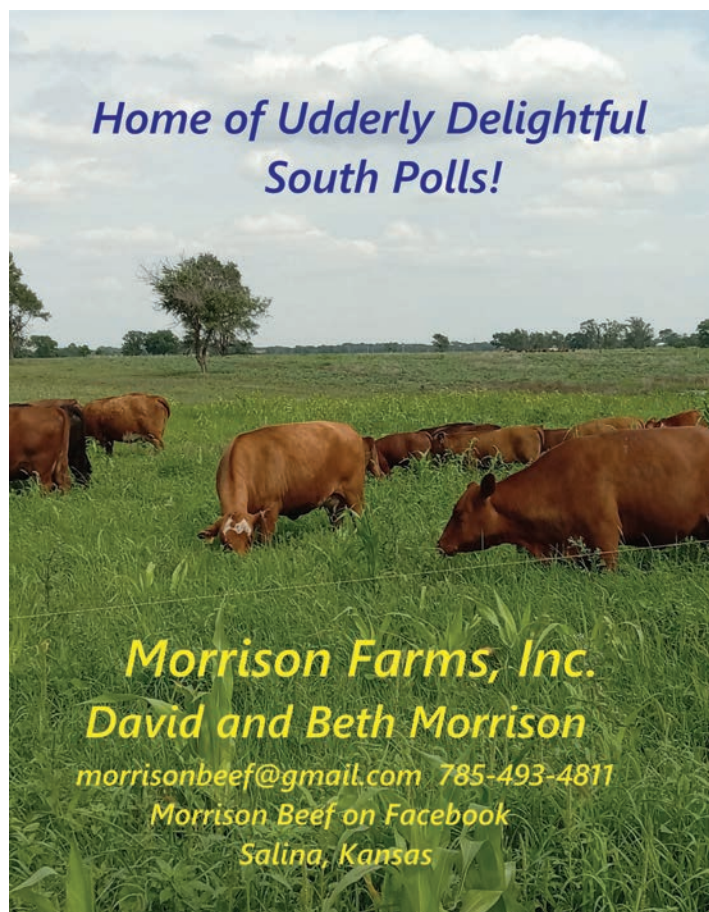
- Number of children or other dependents comprising the family of the recipient.

- Any sources of additional information requested.

- Only one member per household may apply and receive funds. 4. The SPGCA Committee will then notify the applicant regarding the decision.

FOR QUESTIONS CONTACT:

Sunshine Shanks, phone: (573) 578-0948, email: sunshine-shanks@yahoo.com or Ivey Dean, phone: (256) 996-3972, email: iri0001@auburn.edu



*Home of Udderly Delightful
South Polls!*

Morrison Farms, Inc.
David and Beth Morrison
morrisonbeef@gmail.com 785-493-4811
Morrison Beef on Facebook
Salina, Kansas



**MORGAN
CATTLE CO.**

**LIVESTOCK
HAULING**

BLAKE MORGAN

(256)328-0099

morgancattlecollc@gmail.com

LEARN TO RESIST EXTREMES - THE KISS System

By Teddy Gentry

My good friend, Frank Felton, from Maryville, MO told me one day that he used the KISS system.

When I asked what the KISS system was, he laughed, slapped his leg and said, "Keep it simple stupid."

I found out that what Frank meant by that was that the cattle business is not rocket science.

Cows are meant to convert grass or forage to meat. The cow size that makes the most money at the end of the year is the cow

you want to multiply in your herd. Keeping good, accurate records on your cows, and then letting those records dictate your breeding direction is a sure way to move forward. The beef business is so fragmented, it's easy to fall into the old mindset of reaching for extremes in growth, milk, ribeye, marbling or whatever. Learn to resist that temptation as it will only lead to extreme problems later.

Learn how to use the best average bull calves each year out of those old cows that are the right size and shape and have never

missed a year giving you a good calf. Way too often we look at the biggest, stoutest calf and say, "Wow!" I believe it's better to study fertility records of the mamas and then say, "Wow!" With patience and good records the good ones will be obvious as time passes.

So, when I learned what Frank meant by the KISS system, all I can say is "Amen."

Thanks to Frank and all the other good cowboys who took the time to teach us all what a cow should look like as well as what a cow should do.

2025 The South Poll Grazier Photo Contest Winners Announced



First Place 2025 SPGCA Photo Contest, photograph by Judy Freeman, Hartville, MO

Congratulations!



Second Place 2025 SPGCA Photo Contest, photograph by Judy Freeman, Hartville, MO



Third Place 2025 SPGCA Photo Contest, photograph by Jeff Bellflower, Bostic, NC

South Poll Photo Contest - Give Us Your Best Shot!

We want your best South Poll cattle photo to grace the front cover of The South Poll Grazier Magazine.

The winning image will be featured as the cover photo!

Deadline: February 1st. Submit your entries to: info@southpoll.com

Whether it's a stunning pasture scene, a perfect grazing moment, or a portrait that captures the soul of South Poll cattle—we want to see it!



Sumners Farm purchased our first South Poll cattle in 2005 and became charter members of the association.

We are a 75 head farm in North Alabama on top of Sand Mountain which is primarily fescue country, but we do rotate summer and winter annuals.



We strive to provide customers with the best seed stock through daily evaluation and constant assessment of our herd.

Andy served as a member of the South Poll Board of Directors for 10 years and witnessed firsthand the success and growth of the South Poll association and the wonderful community it represents.

We would like to express our appreciation to the Board for continuing to grow the association with integrity and a vision for the future.

Sincerely,
Stanley & Andy Sumners

We do have females available in smaller quantities in the fall as well as herd sires.

Sumners Farm is happy to help you with anything we can and always up for farm visits.



**Sumners Farm
Boaz Alabama
Andy & Stanley Sumners
256-486-7655**

aksumners@yahoo.com • Sumnersfarm.com



@sumnersfarm on
Facebook

LS,



schmidtberger_ranch@outlook.com

2025 SPGCA Board Meeting Recap

SPGCA Non-Profit Status

The SPGCA is currently a 501c5 corporation. In January we applied for a 501c3.

2026 Field Day Host

Nathan Hahn, Unity Farms in Harrodsburg, Kentucky, board member will be the host of the 2026 field day.

Board Member changes

1. Greg Judy was made an honorary board member of the SPGCA
2. Bruce Shanks was unanimously voted in as the Vice President of the Association
3. The board terms for 5 members were up for renewal in June and all were voted to serve another term.

Rules - changes

- a. Membership deadline for mem-

bers to be inactive if dues are not paid

- b. Herd prefix letter 2-6 characters for herd consisting of letters and/or numbers
- c. Fullblood should be red or red and white (remove the word face).
- d. Rule: Fullblood color Red & White
- e. Rule: cannot change historical herd prefix if changing the prefix on a membership
- f. Fee to make changes and reprint a certificate/registration paper changed from \$2 to \$5 each.
- g. For calves born after June 1, 2025, sire verification via DNA will be required on fullblood, purebred, and percentage animals prior to registration.

The South Poll Grazier Magazine

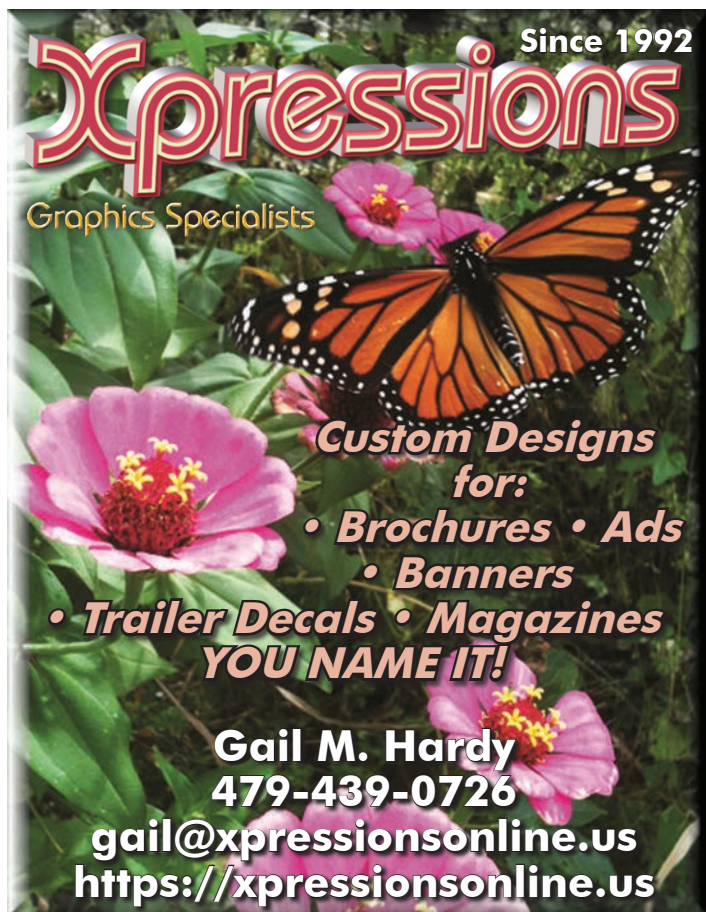
The association decided to publish a SPGCA magazine which will be an annual publication beginning in 2025.

Junior membership and scholarship

The SPGCA board voted and passed for the Junior membership and Junior Scholarship age to be up to 21 years of age. The scholarship is open to any major.

SPGCA Calendar - the calendar is auctioned off at the annual field day.

Conferences/events that SPGCA attends are:



Xpressions Since 1992
Graphics Specialists

Custom Designs for:

- Brochures • Ads
- Banners
- Trailer Decals • Magazines

YOU NAME IT!

Gail M. Hardy
479-439-0726
gail@xpressionsonline.us
<https://xpressionsonline.us>



SPGCA Reminders

PLEASE REMEMBER IT IS THE RESPONSIBILITY OF THE SELLER TO APPLY FOR AND PAY FOR THE TRANSFER OF ALL ANIMALS!

REMINDER:

For calves born after June 1, 2025, sire verification via DNA will be required prior to registration.

Whole Herd Reporting is mandatory for members and due annually.



Join us on the South Poll Grass Cattle Forum Facebook page

History of the

Teddy Gentry started the South Poll breed in 1989 when he got the idea to genetically combine the best traits of four maternal Bos Taurus breeds to form a more heat tolerant animal that would work for his cattle operation in Fort Payne, Alabama. He also wanted an animal with a gentle disposition that would produce tender beef on grass.

“I wanted something that would allow me to maximize my profitability per acre on the grass that I’ve got. These cows work for me, I don’t work for them,” Gentry said at a meeting of the SPGCA.

Gentry started with a Hereford/Red Angus base, but since only a small percentage of the overall population in those 2 breeds are adapted to warm areas like his own, he started looking for other breeds that would complement the maternal components of the Hereford and Red Angus breeds.

Shortly thereafter, he purchased a set of Barzona/Hereford females he said went on to impress him with their overall hardiness and easy keeping ability on high moisture grasses. Gentry says that Barzonas are called the ‘hardy breed’ and were developed by the Bard family in Arizona.

Gentry later selected the Senepol breed developed on the island of St. Croix in the Virgin Islands by breeding the native N’dama cattle to Red Poll bulls. Senepols are very slick haired and according to the University of Florida research are one of the most heat tolerant breeds they’ve tested.

Gentry says he started crossing Barzona/Herefords and Senepol/Red Angus around 1989 and it was the mating of those 2 half bloods that produced the 4 way composite he named South Poll.

“Fertility and longevity account for the numbers 1 and 2 traits on a chart of economic importance for the commercial cattleman. So, in

South Poll Breed

our cow/calf operation, those 2 traits are at the top of our list,” Gentry said.

“Increased selection for growth EPDs in a cow herd leads to a larger framed animal or a huge ribeye area in a grass program will adversely affect fertility and longevity, the very things we have placed first on our list,” he says.

South Poll cattle, even though they were developed in the southeast part of the U.S. have proven adaptable in the Southwest and Midwest as well. Missouri is our top state for South Poll population, followed by Texas. Several years ago, a bull was sold to a producer in Utah, who used him in the harsh conditions of the mountains in the southern area of the state. His cattle have access to thousands of acres and as a result, he only sees them occasionally. He can count on his South Poll bull to lead the cattle up and down the mountain and he was so satisfied, he came back for 5 more bulls.

The foundation for the South Poll breed was built on the very best purebred cattle from each individual breed, with cows that calve year after year with a calving interval of less than 365 days.

The SPGCA and its members will never lose sight of the big picture and, though we are documenting every aspect of the breed just as other purebred organizations do, the total purpose of the breed is to provide genetics that can be profitable for the commercial cow/calf producers.

“We will always work hard to make the South Poll breed gentle and efficient. We strive for moderate birth weights, adequate growth and acceptable carcass quality in our cattle and the production of high libido bulls. We promise to conduct our business dealings honestly and to assume a leadership role in the education of our youth and the natural production of quality grass fed beef,” Gentry pledged.

Photograph by Becky Szarzynski Shaw, Fairfield, VA

*Six Generations
Performance & Integrity*

Daniel & Michelle Massey
501.658.1366
501.339.7425

Gavin Massey
Ansley Massey
Herdsman



MASSEY RANCH



Registered South Poll Cattle

CAMPBELL, ARKANSAS

EST. 1874



ROSE HILL FARM

RAISING HIGH QUALITY, LOW INPUT SOUTH POLL CATTLE



Brooks & Brooke Dickson 770.519.8567 Elberton, GA

Providence Farm South Poll

Perry & Debbie McChesney
3283 Dodd Mtn Road
Shirley, AR 72153
(870)307-9139
<https://www.facebook.com/ProvidenceFarmSouthPoll/>

*We causeth the grass to grow for the cattle, and herb for the service of man:
that he may bring forth food out of the earth; Psalm 104: 14*

South Poll Grass Cattle Association

Rules And Regulations

effective
8/11/25



SOUTH POLL

The Southern Mama Cow Breed

MEMBERSHIP

1. Regular Membership
2. Junior 8 to 21 years of age
 - a. Juniors will pay regular cattle registration fees
 - b. Parents do not have to be a member for Junior to be a member
3. Membership Name
 - a. Name, Farm/Ranch name, Corporation
4. Membership Application
 - a. Must be filled out for each new member
5. Fees
 - a. Membership fees are \$100/annually and due December 31st each year
 - b. Membership fees are non-refundable
6. Inactive Members
 - a. For dues not paid within 90 days, your membership will become inactive. If your membership is not paid, registration and transfers fees will be at the non-member rate.
 - b. For invoices past due 90 days, your account will become inactive and you will not be able to log into your account or register/transfer cattle until your past due invoice are paid in full.

REGISTRATION FEES

1. Members: Percentage, Purebred, Fullblood
 - a. \$20 under 2 years of age
 - b. \$35 over 2 years of age
2. Non-members: Percentage, Purebred, Fullblood Cattle
 - a. Registration \$40 (any age)
3. Registration Certificate Correction \$2.00/each
4. At the discretion of the Board, an extra administration fee of \$10/head may be billed to members or non-members for incomplete registration information
5. Registration fees may be changed from time to time at the discretion of the Board

TRANSFER FEES

1. Members: percentage, purebred and fullblood transfers.
 - a. \$20 per animal
2. Non-members: percentage, purebred and fullblood transfers.
 - a. \$40 per animal
3. It is the responsibility of the seller (or sales agent) to apply for and pay for the transfer of all animals. The Association will no longer process any transfer requests from the buyer. Additionally, failure to transfer and/or transfer applications made after 6 months from the date of sale are subject to temporarily revoked membership rights.
4. A seller (or sales agent) that fails to provide the Association with application for transfer of a certificate of registration within 6 months of the date of sale and upon written notice to the Association by the buyer on or after 6 months of failure of transfer by the seller, will be contacted as to the basis for the failure and to seek resolution. If the seller does not timely respond to the Association's request, the seller is subject to temporary suspension of the rights and privileges of membership including processing registration or transfer applications. The temporary suspension will expire upon receipt of the transfer application(s) and full payment. The South Poll breed is designed to be slick haired, gentle, fertile, heat tolerant and small to moderate framed.

SOUTH POLL REGULATIONS

1. The South Poll breed consists of equal percentages of Red Angus, Senepol, Hereford and Barzona.
2. All Fullblood, Purebred and Percentage cattle (see below) must descend from foundation Bent Tree Farms animals.

3. Hoof color - Black preferred. Red is acceptable.
4. Horned and scurred cattle will not be discriminated against, but will be noted on the registration papers.
5. Eye pigmentation is preferred but "white eyed" animals are accepted.

FULLBLOOD CATTLE

1. Fullblood designated animals are four-way crosses consisting of $\frac{1}{4}$ Red Angus, $\frac{1}{4}$ Hereford, $\frac{1}{4}$ Barzona and $\frac{1}{4}$ Senepol and must be descendants of foundation Bent Tree Farms animals.
2. Fullblood status will NOT be designated for animals that are bred up (see below)
3. Fullblood status will NOT be designated for 1st generation crosses (i.e. Barzona/Hereford x Senepol/Red Angus)
4. Fullblood designation/registration requires the following to be recorded
 - a. Sire
 - b. Dam
 - c. Birthdate
 - d. Birth weight
 - e. Calving ease
5. Fullblood cattle must be red or red and white in color
6. If an animal is registered with a Multiple Registered Sire (MRS) and/or Dam, it is not eligible to be registered as a fullblood.
7. For calves born after June 1, 2025, sire verification via DNA will be required on fullblood, purebred, and percentage animals prior to registration. See submission guidelines on South Poll website.

PUREBRED CATTLE

1. Purebred designation can be obtained from animals that are 'bred up'—assuming one parent descend from foundation Bent Tree stock.
 - a. For Females 7/8 is considered Purebred South Poll

CONTINUED ON PAGE 31

- b. For Bulls 15/16 is considered Purebred South Poll
2. Purebred status will be designated for 1st generation crosses (i.e. Barzona/Hereford x Senepol/Red Angus. Subsequent offspring (male or female) of 1st generation individuals may be registered as Fullbloods.
3. Purebred designation/registration requires the following to be recorded
 - Sire
 - Dam
 - Birthdate
 - Birth weight (Optional)
 - Calving ease
4. Purebred cattle can be any color, including black.
5. For calves born after June 1, 2025, sire verification via DNA will be required on fullblood, purebred, and percentage animals prior to registration. See submission guidelines on South Poll website.

PERCENTAGE CATTLE

1. Percentage designation shall be extended to all males and females that are as much $\frac{1}{4}$ and less than $\frac{7}{8}$ South Poll for females and 15/16 South Poll for males
2. To be eligible for registration at least one parent of percentage cattle must descend from foundation Bent Tree Farms

animals and be registered with the Association.

3. Percentagedesignation/registration requires the following to be recorded
 - Sire
 - Dam
 - Birthdate
 - Birth weight (Optional)
 - Calving ease
4. For calves born after June 1, 2025, sire verification via DNA will be required on fullblood, purebred, and percentage animals prior to registration. See submission guidelines on South Poll website.

OWNERSHIP OF SIRE

1. A breeder does not have to own any interest in a sire in order to register progeny.

CALVES OF MULTIPLE BIRTHS

1. Calves of multiple births must be indicated on the application for registration.

EMBRYO TRANSFER/CLONING

1. No embryo transfer or cloning is allowed.

IDENTIFICATION REQUIREMENTS

1. All animals must be uniquely identified with one of the following BEFORE applying for registration.
 - a. Fire brand
 - b. Freeze brand
 - c. Metal brucellosis tag or state tag
 - d. EID

- e. 2 ear tags
- f. Tattoo

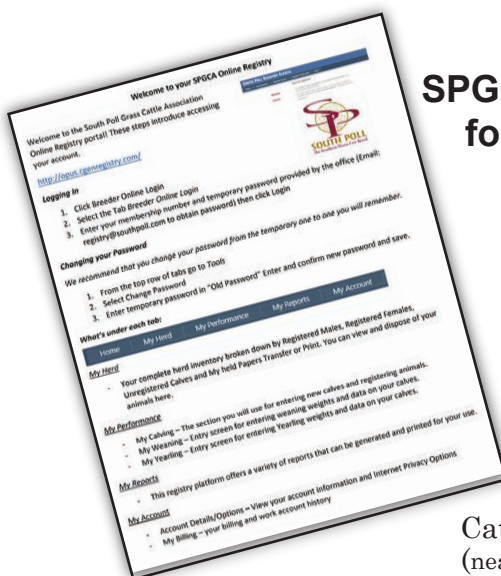
2. No two calves, regardless of sex, can be identified with the same number in the same herd in the same year.
3. Once an animal is registered with the SPGCA, the animal's permanent identification cannot be changed on the individual animal.
4. Herd Prefix must be between 2-6 letters and/or numbers.
5. The herd prefix cannot be changed on any historically registered animals.
6. The registered animal is to be named: Herd Letters - Sire ID - Dam ID - Calf ID

WHOLE HERD REPORTING

1. Whole Herd Reporting is mandatory for members and due annually. Whole Herd reports are available through your member profile. Whole Herd Reports must be submitted by December 31st. Members will not be able to register cattle until the report has been received by the SPGCA office.

DNA TESTING

1. For calves born after June 1, 2025, sire verification via DNA will be required on fullblood, purebred, and percentage animals prior to registration. See submission guidelines on South Poll website.



SPGCA Online Registry — Your Comprehensive Resource for all things related to the South Poll Cattle Registry

REGISTRY@SOUTHPOLL.COM

**HTTPS://SOUTHPOLL.COM/
CATTLE-REGISTRATIONS/**

816-629-8010

Cattle Registry Instructions
(near the bottom of the web page).

THE COW YOU'LL REGRET NOT OWNING



South Polls aren't for everyone,
just graziers who want low-input,
high-output cattle.



Hear from South Poll breeders who've been
where you are.
Listen to their lessons. Share their wins.

OZARK HILLS GENETICS

18 Month Old, Forage Tested Bulls for Sale

Pharo Cattle Company, Alabama Bull Sale
Saturday, November 15, 2025

Featuring TENET™ Certified Bulls

- On-Line bidding option
- Complete data set on all bulls
- Delivery available

Females for Sale at the Farm



*TENET Certified Sire "Beefcake"
(#43262)*



Herd sire: 4439 (#35653)



David Hall
(417) 293-1072
West Plains, MO

DNA Information

By South Poll Registry Office

South Poll Members,

With the new rule that went into effect for South Poll calves born June 1, 2025, and beyond, there have been a lot of questions on the best routes to go for DNA testing and how to get started. Many members have been testing for parentage with Neogen or Zoetis on their own over the past few years and there is a way to connect it all together. We'll talk about some steps you can take for the new registration requirements.

RULE:

All South Poll, Fullblood, Purebred, and Percentage calves born after June 1, 2025, must be Sire Verified by DNA testing.

Why is this important: DNA verification ensures the accuracy of the SPGCA Herd Book and protects the integrity of the breed and published pedigrees.

DNA testing may seem intimidating; however, it is simpler than you may think. DNA samples can be collected by producers, no vet required. There are multiple sample types that can be collected allowing you as a producer to pick

what works best for you. Ordering your testing can be completed through your South Poll registry login, via hard copy form through email or you can mail your samples directly to your SPGCA registry office.

WHERE TO START:

- Review the process and sample types. Find the sample collection method that will work best for you and order supplies.
- Supplies can be ordered here: <https://www.neogen.com/categories/sampling-equipment/>
- It is important to start thinking about your summer and fall 2025 calves now. Pull samples on your herd bulls to get their DNA on file. You do not have to send in your bull samples right away. Collect your samples and store appropriately until you are ready to test.
- Previous test records: If you have been testing through Neogen or Zoetis and plan to complete your testing through South Poll, you will need to contact the lab to release your account DNA markers to SPGCA. Contact the registry office for assistance.

THINGS TO REMEMBER:

- Be conscious of registration deadlines for sales and shows. DNA testing takes a little time to complete.
 - Mail Time to Lab – Dependent on mailing service
 - DNA Testing – approximately 3 weeks, 4 during holidays and peak season
 - Parentage Resolution – need help resolving parentage issues? This can take some time depending on the availability of sire DNA.
 - Registrations – once results are in, registration happens quickly. Registrations can be viewed through your member login, animal searches, and hard copy certificates issued with first class mail.
 - Don't wait to pull your sire samples! Anything can happen, samples cannot be pulled from deceased animals unless they are pulled immediately and frozen.
- Please do not hesitate to contact us at the registry office with any of your questions for DNA testing, registration, and anything else we can assist you with.

SPGCA Registry Report

By Becky Miller, SPGCA Registry Secretary

As we reflect on another successful year with the South Poll Grass Cattle Association, I'm pleased to report that the registry office continues to run smoothly and efficiently. Our team remains committed to providing timely service and meaningful support to the membership, and it's been a genuine pleasure working with so many of you throughout the year.

In 2024, we processed 2,696 registrations and 1,597 transfers, and we've already surpassed that pace in the first half of 2025 — with 3,192 registrations and

1,362 transfers processed from January through June. These numbers reflect more than just paperwork; they represent the continued growth and momentum of the South Poll breed and the commitment of producers investing in their herds.

One of the highlights of the past year has been connecting with members — whether by phone, email, or in person. It's always encouraging to see how passionate and engaged our breeders are, and it's an honor to support your efforts from the registry office.

As we look ahead, the updated DNA policy is an important focus. We encourage all members to take

a close look at their current herd bulls and ensure DNA testing is completed in a timely manner. Staying ahead of these requirements will help avoid delays and ensure a smoother process as you continue to register calves and make breeding decisions.

Thank you for your continued trust in the SPGCA registry office. We're here to help — whether it's answering questions about registrations, guiding you through DNA testing, or just talking cattle. I look forward to another year of working alongside you to support and strengthen the South Poll breed.

Our mission is to share, inspire, and promote our passion for land and livestock stewardship. Utilizing God's gift of observation as our primary tool, focusing on biological and ecological function, eliminating industrial norms. We believe in highly adaptable management strategies that promote natural cycles that create resiliency in our land and livestock.



UNITY FARMS

HOSTS OF THE 2026
SOUTH POLL FIELD DAY
SEPT. 18-19

UNITY FARMS
KENTUCKY

NATHAN, ELLIE, SADIE, AND MATHEW HAHN
(502) 354-1920

UNITYFARMS2@GMAIL.COM

[HTTPS://UNITY-FARMS.COM/](https://unity-farms.com/)

DNA Submission - Neogen Instructions

Testing Options & Fees

- Parentage \$17.00
 - o Registration Requirement
- Igenity Beef Only \$30.00
 - o Includes Parentage
- Horn/Poll Test \$42.00
- Coat Color (Black/Red) .. \$16.00
- Hair Sample Processing .. \$5.00

Submission

OPTION 1: THROUGH MEMBER LOGIN

1. Login with Username & Password
2. My Herd → My Lab → My Lab Test Requests
3. Click Add
4. Type in animal's registration number or UNR record (see below to get UNR record)
5. Select Test Request
6. Sample Source – select then type in sample barcode (except hair samples).
7. Parents will automatically fill in, additional parents can be added.

8. Click Create Test & Continue with additional animals

9. SPGCA Staff will review orders and place a Preorder with Neogen. An Order Confirmation sheet will be emailed to you.

10. Print & Mail order confirmation received to Neogen Genomics with Samples

**To get UNR record on a calf, go to My Performance → My Calving. Select calving year and click Add. Fill out all available information on the calf. At bottom, click save. Leave "Register" box unclicked.*

**For multiple sires, list one sire or your MRS number. Sires can be added on the test request and updated once results are in.*

OPTION 2: HARD COPY SUBMISSION FORM

1. Forms are available at www.southpoll.com. Completed forms should be sent with samples to the SPGCA office to be processed and submitted by SPGCA.

Sample Types

Supplies can be ordered here: <https://www.neogen.com/categories/sampling-equipment/>

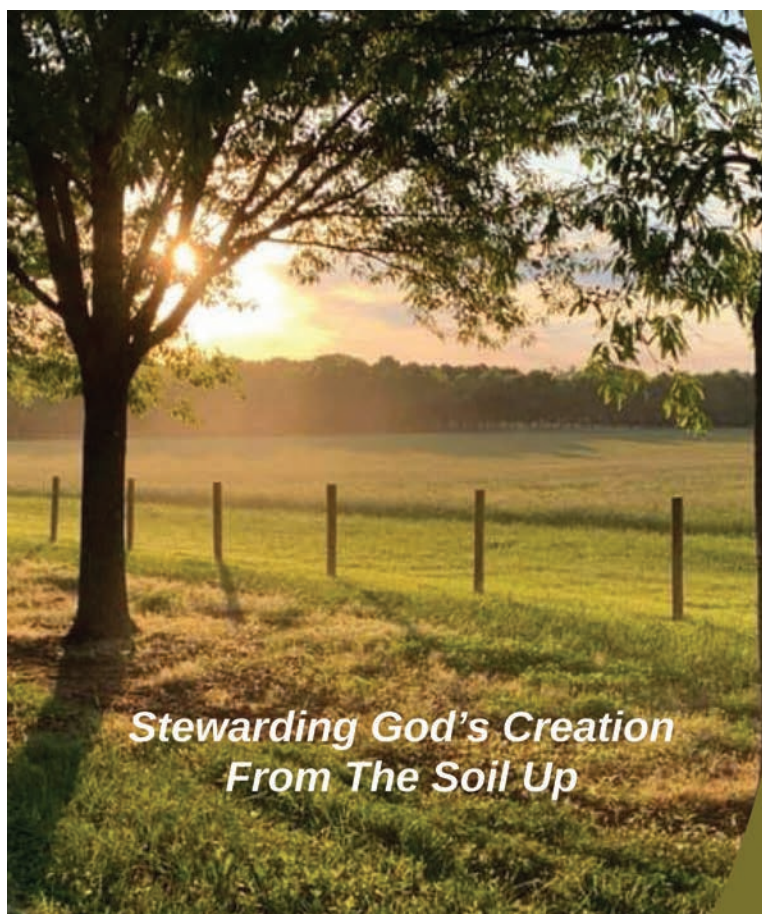
Hair – Pulled from the switch/bottom of the tail. Must contain visible root ball. Hair samples can be placed in individual bags or envelopes, or can be placed on a lab hair card that can be ordered from the link above.

Blood Card – a small amount of blood acquired from pricking an ear or drawing from the tail. Blood must be placed on a lab FTA Blood card.

Allflex TSU – a small plug of tissue taken from the ear in a TSU collector tag. Collectors and supplies can be ordered from the link above.

Semen – semen can be submitted in its original straw. Straws can be thawed and must be shipped in a box with protection.

Atypical – contact the office for instructions on atypical samples (meat, ears, etc)



*Stewarding God's Creation
From The Soil Up*



Registered South Poll Cattle

Paul & Caroline Epting
Mountville, SC
(864) 630-0152

www.rollinghillranch.org



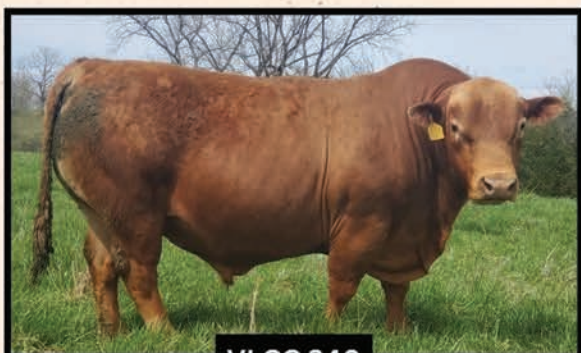
VOSS LAND & CATTLE COMPANY

LINN, MISSOURI

SPGCA Charter Members

Ralph & Jerry Voss

573-694-1682



VLCC 340



VLCC 101

If you think calves from these bulls would look good on your farm, give us a call. After a quarter century in the South Poll business, we can explain the advantage of South Polls.

FERTILITY, LONGEVITY, DISPOSITION and ADAPTABILITY



vossouthpolls.com

MISSOURI SOUTH POLL CATTLE ASSOCIATION

2ND ANNUAL

MISSOURI SOUTH POLL SALE

JANUARY 16-17, 2026

OZARKS REGIONAL STOCKYARD

WEST PLAINS, MISSOURI



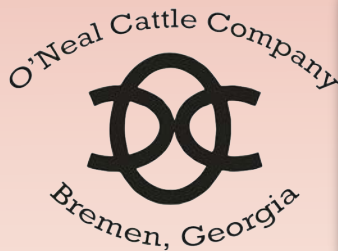
FOR MORE INFORMATION, PLEASE VISIT:

MOSOUTHPOLL.COM

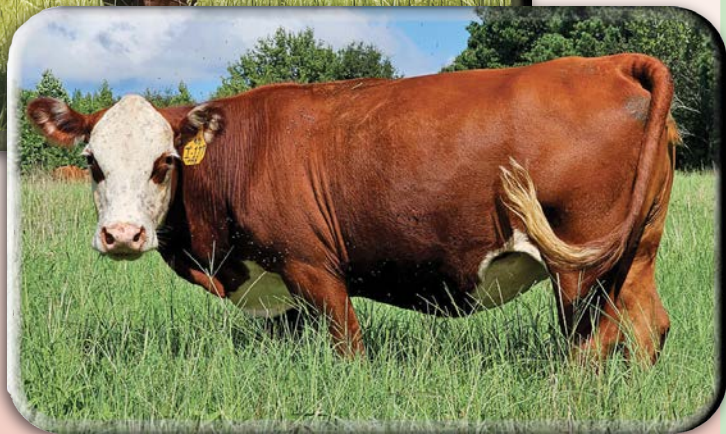
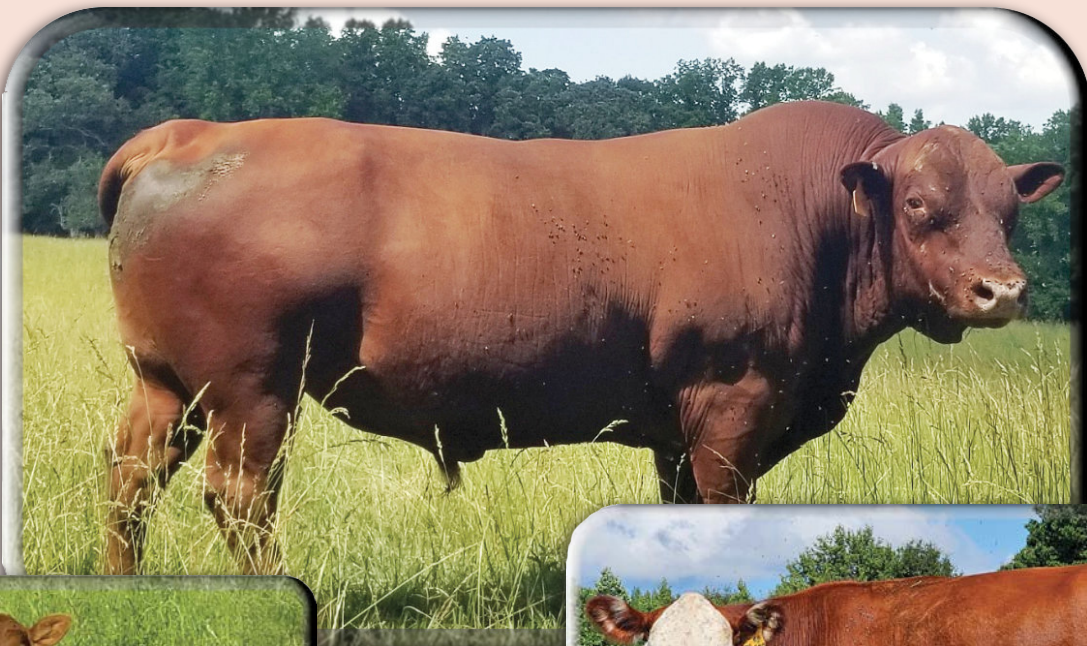
OR

**MISSOURI SOUTH POLL
FACEBOOK GROUP**

O'Neal Cattle Company



***We are a regenerative agricultural farm located in Bremen, GA.
We raise South Poll cattle and sell Farm to Table beef and seed stock.***



Wes O'Neal
O'Neal Cattle Company, Bremen, GA
770-206-0318
wlloneal@aol.com
<http://www.onealcattlecompany.com>



Follow us on
Facebook
onealcattlecompany

LOW INPUT - FORAGE ONLY - EFFICIENT



EMBER CATTLE COMPANY

South Poll Breeding Stock

Fairfield, Virginia EMBERCATTLE.COM

EmberCattle@gmail.com   [@embercattle](https://www.facebook.com/embercattle)

ENJOY RANCHING

With Cows that Make it a Pleasure



Grassfed, gentle, hotwire trained,
good mamas & good genetics

Hoof & Hide LLC

Athens, Texas

903-681-4211

www.hoofandhide.com

info@hoofandhide.com

Females sell in April & October

Bulls & semen available year-round

Sign up for our email announcements

to hear about upcoming cattle for sale.

South Poll Grass Cattle Association Members

as of 7/15/25

JUNIOR MEMBERS

Kyle Aulgur	Sadie Childs	Joshua Farm	Danny Ingram	Samatha Lutz	Owen Smith
Kody Aulgur	Malakai Colchin	Aden Ferris	Brooks Johnson	Ansley Massey	Agnes Smith
Emma Catherine Baker	Grant Culver	Gabriel Garner	Cole Johnson	Macon McBride	Hunter Stockman
Luke Barron	Hallie Dean	Gregory Gaston	Ty Jones	Charlie Mulheran	Noah Stuart
Hadley Bauman	Jaxson Dean	Emma Good	Willima Kise	Dominic Pinate	Maggie Sumners
Brett Bauman	Oak Derfus	Arthur Graybill	Bradley Koehn	Jenna Rathbone	Noah Sumners
Judson Beutke	Ellie Mae	Sylvester Graybill	Marianne Kuhn	Lawsen Rathbone	Carter Torrence
Joshua Brice	Diss	Jacob Greenlee	Ian Kurtz	Jenna Rathbone	Elam Torrence
Grady Buttrey	Jacob Epting	Sydney Hawkins	Rhett Lachney	Garbriel Reny	Lincoln Torrence
Rachel Buttrey	Brody Erickson	Camryn Heuser	Raley Lachney	Kaitlyn Roberts	Karl Totemeier
Jackson Caldwell	Jack Erickson	Eli Hopping	Willow Lawrence	Sarah Beth Roberts	Detrich Totemeier
Gavin Chamber	Will Erickson	Nicksy Hopping	Oakley Lawrence	Oliva Shaw	James Vaden
Amelia Chambers	Sam Erickson	Courson Hutchison	Chaney Leonard	Emily Shipple	Samuel Vaden
				James Smith	Bowen Watson

Adams Cattle Co.....	Jeff Beth & Blake Adams.....	Wilmer, AL.....	251-510-8814
Salt Creek Farms.....	Anthony Adams	Munford, AL	256-493-0847
Allen-White Legacy Farms	Jimmy Allen	Valley Head, AL	256-701-3384
Horseshoe Terrace Farm	Carter & Sheila Baker.....	Henagar, AL	256-899-2074
	Ed Baugh	Fort Payne, AL	256-845-0706
Double J Farm	Jeff Bice	Brierfield, AL.....	205-965-3006
Ollie's Creek Farm	Matthew Blevins.....	Higdon, AL	256-605-2216
	Ricky Bradford	Vestavia Hills, AL	205-969-3703
Shuva Eretz	Scott Branham	Wetumpka, AL	210-630-9958
Rocky Ridge South Poll Farm.....	Dewey & Pat Brooks	Scottsboro, AL	256-717-8145
Looking South Farms.....	William Bruns	Madison, AL	910-391-8692
Sunwise Farm	Forrest Burleson.....	Hartselle, AL.....	256-227-9581
3191 Farm.....	Anthony Byars.....	Decatur, AL.....	256-318-5840
Terrapin Creek Cattle	Paul Canter	Piedmont, AL	678-859-6318
Wolf Branch Farms	Jeremy Carwile	Hartselle, AL.....	256-566-4533
Spring Creek Farm	Andrew Chapman.....	Springville, AL	205-531-5766
Little Lagniappe Farm.....	Jon Michael Clark	Pisgah, AL	334-614-5338
MC Farms	Mark Coger	Anniston, AL	256-283-4923
Cordell Farms	Tim Cordell	Albertville, AL	256-293-2616
Creech Farms.....	Doug Creech	Boaz, AL	256-572-6244
	Anthony Crosson	Ohatchee, AL	256-239-1003
Sawdust Farms.....	Jeff Culver	Hillsboro, AL.....	509-953-3928
Magnolia Grove Farms.....	Patrick Davenport.....	Rehobeth, AL	334-791-8701
Sand Rock Farm	Rodney Davis	Geraldine, AL	601-410-6125
Desoto Farms	Devin Dean	Fort Payne, AL	256-996-2117
Downey Land & Cattle.....	Dustin Downey	Grant, AL	256-990-1330
Duffy Livestock LLC.....	Carl Duffy	Cottonwood, AL.....	813-610-5848
Eberhart Farms	John Eberhart	Fort Payne, AL	256-630-5915
Alan Eckl Farms.....	Alan Eckl	Florence, AL	256-710-9092
Pond Creek Farms.....	Dustin & Daniel Edwards.....	Pisgah, AL	256-506-9876
Remraf Farm	Brian Farmer.....	Crossville, AL	256-706-4111
Folmar Field & Farm.....	Pete Folmar	Talladega, AL	205-603-8364
Bent Tree Farms	Teddy Gentry	Fort Payne, AL	256-996-0777
Running Rabbits Farm	Ivan Noel Gonzalez Dollar	Anderson, AL.....	256-606-8684
Stone Holding Company LLC.....	Brent Halderman	Mentone, AL	937-564-7349
Helms Farm	Rex Helms.....	Cullman, AL	256-796-7535
The Crooked Pine.....	Doug Herrin	Robertsdale, AL.....	251-622-0797
Hills Of Clay	Rich Hill	Jacksonville, AL	757-504-6157
Hollow Hills Farm.....	Mark B Hill.....	Phil Campbell, AL	256-702-7806
Slow Roots LLC.....	Casey & Alannah Hill	Phil Campbell, AL	256-668-3466
The Hostellers	Jason Hostetler	Danville, AL	256-708-9358
Howington Farms.....	Shane & Mike Howington.....	Hokes Bluff, AL	334-328-9400
Sugarberry Farms Livestock	Raymond Jansen	Ashville, AL.....	205-215-9213
Saughatchee Creek Farm	Michael Chette Jenkins	Lafayette, AL.....	334-744-9678
Happy Meadow Farm	Wyatt Jones	Pisgah, AL	813-426-6146
Jordan Cattle Company.....	Jacob Jordan	Crossville, AL	256-572-1071

CONTINUED ON PAGE 43

SOUTH POLL GRASS CATTLE ASSOCIATION MEMBERS, CONTINUED FROM 42

J&K Farms.....	Tyler Keeton.....	Lexington, AL.....	256-710-9730
Kellogg Farms South.....	Haley Kellogg.....	Gulf Shores, AL.....	251-752-9588
Kenner Hollow Farm.....	Trey Kennermer.....	Lexington, AL.....	256-278-8693
Jmk Cattle.....	John Key.....	Sylacauga, AL.....	404-219-0696
J&k Farm.....	Makenzie King.....	Boaz, AL.....	
Mount Zion Acres.....	Rebecca Knuckles.....	Eclectic, AL.....	334-235-0133
J-Jank Farms.....	John Lyons.....	Piedmont, AL.....	256-282-3232
Seven Branches.....	Jack Manifold.....	Camp Hill, AL.....	334-319-6077
Blackberry Creek Farm.....	Joe & JC Martin.....	Henagar, AL.....	256-996-9472
McCreless Farms.....	Chris McCreless.....	Waterloo, AL.....	256-366-3062
Hanover6.....	Roger McEwen.....	Goodwater, AL.....	256-872-0569
Last Chance Ranch.....	Norman Mills.....	Florence, AL.....	256-633-1525
Jeff & Ellen Monroe.....	Jeff Monroe.....	Florence, AL.....	
Wes Moon.....	Wes Moon.....	Guntersville, AL.....	256-302-6490
Cainan Land Farm.....	Mike Morgan.....	Trinity, AL.....	256-974-1913
Morgan Cattle Company.....	Blake & Kelsi Morgan.....	Gadsden, AL.....	256-328-0099
Motec Farms.....	Chris Mote.....	Decatur, AL.....	256-345-1312
Lost Hammer Farms.....	Greg Nelson.....	Ozark, AL.....	334-432-0507
Ray Nolen.....	Ray Nolen.....	Montevallo, AL.....	205-862-3148
TP Farms.....	Taylor Parsons.....	Hanceville, AL.....	205-936-5186
Peake Farms LLC.....	Kirk Peake.....	Huntsville, AL.....	256.520.6478
	Jack B Pennington.....	Muscle Shoals, AL.....	205-427-1349
Bagley Farms LLC.....	Bryan Peter.....	Dora, AL.....	717-575-1543
Dallas Petty.....	Dallas Petty.....	Crossville, AL.....	256-638-5085
Frog Creek Cattle.....	Phillip Pope.....	Piedmont, AL.....	256-239-7808
Gordon Planting Company.....	Samuel Prim.....	Dothan, AL.....	334-671-9555
Pritchett Farms.....	Mary Pritchett.....	Heflin, AL.....	256-342-2294
Quick Farms.....	Chris Quick.....	Hanceville, AL.....	256-338-1076
Kase Cattle Company.....	Hunter & Samuel Roberts.....	Florence, AL.....	256-214-3370
Roberts Farm.....	Dave Roberts.....	Fort Payne, AL.....	256-996-1788
Magnolia Oaks Farms.....	Darbie Rosser.....	Centre, AL.....	256-706-9860
Sealey Cattle Company.....	Dylan Sealey.....	Albertville, AL.....	256-677-1156
Snow Family Farm.....	Tom Snow.....	Athens, AL.....	571-215-7488
Suarez Point Farms.....	Frank Springfield.....	Birmingham, AL.....	205-835-4826
Austin Steen.....	Austin Steen.....	Troy, AL.....	251-244-0168
6S Farms.....	Bucky & Marie Stevens.....	Ozark, AL.....	334-432-0003
Sumners Farm.....	Andy Sumners.....	Albertville, AL.....	256-486-7655
Taunton Farm.....	Mike & Karen Taunton.....	Chelsea, AL.....	205-213-6674
K&M Farm LLC.....	Miles & Karli Waits.....	Jemison, AL.....	205-568-0786
Eric Waldrop.....	Eric Waldrop.....	Albertville, AL.....	256-506-2280
	Bruce Watkins.....	Vernon, AL.....	205-270-6540
Rooted Boots Pastures.....	Amy Watts.....	Ohatchee, AL.....	708-334-4097
Rock Creek Farm.....	Randy Whisonant.....	Warrior, AL.....	205-365-3706
Harvest River Farm.....	Bruce & Sandra Whitehill.....	Alexander City, AL.....	256-794-1880
Green Chapel Grazers.....	Daniel Willkie.....	Fyffe, AL.....	256-601-3511
B&L Cattle Co.....	Bobby & Linda Wilson.....	Sylacauga, AL.....	256-249-4512
	Bert Woodham.....	Dothan, AL.....	334-790-5101
Grace Family Farms.....	Gary Yoder.....	Falkville, AL.....	256-758-5885
Deep Blue Farms.....	John Armstrong.....	Hardy, AR.....	870-710-1706
Pure South Pastures.....	Marc Bateman.....	Lonoke, AR.....	501-680-4696
Blasdel Legacy Farms.....	Steven Blasdel.....	Elizabeth, AR.....	712-242-5756
Circle PK Ranch.....	Paul Bush.....	Greenwood, AR.....	501-539-1893
Dobby Cattle Ranch.....	James Curtis.....	Conway, AR.....	321-262-9179
JS Family Farms.....	Jason Everett.....	Greenbrier, AR.....	501-366-4220
Fields Farms.....	Danny Fields.....	Siloam Springs, AR.....	479-790-4217
Doug Galloway Ranch SE OK Div.....	Doug Galloway.....	Fayetteville, AR.....	479-409-6660
Harmon Farms.....	Chris Harmon.....	Perryville, AR.....	501-772-1547
CICI Farms.....	Kenneth Hollis.....	Vilonia, AR.....	501-940-3563
Hunter Cattle Ranch.....	Rick Hunter.....	Omaha, AR.....	602-574-8151
Heifer Project International.....	Heifer International.....	Perryville, AR.....	501-889-7009
Riverland Family Farm.....	Dan Johnson.....	Conway, AR.....	719-207-1315
Mashie Farms.....	Luke & Emily Jost.....	Elkins, AR.....	479-871-9939
Lentz Farms.....	Greg Lentz.....	Green Forest, AR.....	479-530-7723
Levy Farms Inc.....	Lanette & John Levy.....	Aplena, AR.....	870-577-6552
Denman Farms.....	Jim Martin.....	Bradley, AR.....	870-904-8995
Mid-state South Poll Cattle Association.....	Lynda Massey.....	Marshall, AR.....	501-339-7425
Providence Farm.....	Perry & Debbie McChesney.....	Shirley, AR.....	870-307-9139

CONTINUED ON PAGE 44

SOUTH POLL GRASS CATTLE ASSOCIATION MEMBERS, CONTINUED FROM 43

Flying M Ranch.....	Justin McCuiston.....	Heber Springs, AR.....	870-219-3930
McLelland Cattle Company.....	Clay McLelland.....	Prescott, AR.....	870-796-0722
Sonus Farms.....	Beatrice & Tim McQueen.....	Salem, AR.....	805 302 6200
Bryan Meldrum.....	Bryan Meldrum.....	Fayetteville, AR.....	501-508-1025
Newberry Family Farm.....	Kirtis Newberry.....	Gepp, AR.....	972-467-7952
	Richard Newton.....	Alma, AR.....	479-459-9000
Rainbow Valley Farmstead.....	Brenda Odom.....	Mammoth Spring, AR.....	479-207-2859
The Hollow & The Hyte Farms.....	Marvin Parks.....	Leslie, AR.....	501-733-4346
Bradshaw Mountain Farm.....	Chase Peyrot.....	Huntsville, AR.....	479-737-5220
	Greg Pillow.....	Plumerville, AR.....	501-514-4783
Bar Z Beef LLC.....	Darren Printz.....	Springdale, AR.....	432-210-3883
Restoration Farm.....	John & Kaleah Riordan.....	Rudy, AR.....	479-739-6408
	Gordon Szama.....	St. Joe, AR.....	406-224-5328
Snowden Cattle Company.....	Allen & Cheryl Snowden.....	Oak Grove, AR.....	479-462-8381
Back Hills Farm LLC.....	Bowen Troyer.....	Flippin, AR.....	937-336-6644
VW Family Farm.....	Ben Vinson.....	Rosebud, AR.....	501-278-6118
Wilds Farm.....	Jason Wilds.....	Plumerville, AR.....	501-472-2185
Youngblood Grassfed Farm.....	Andy & Tracy Youngblood.....	Grannis, AR.....	479-243-5423
Gila Diversified Livestock.....	Chase Merrell.....	Duncan, AZ.....	480-369-6667
Nelson Ranch Cattle.....	Collin Nelson.....	Mesa, AZ.....	480-298-1567
Dewey Acres.....	Aaron New.....	Sardis City, CA.....	256-840-9891
Rusty Hide Cattle Company.....	Ned Pfeiffer.....	Los Altos Hills, CA.....	847-682-8218
White Horn Cattle Company.....	Mark Goodman.....	Denver, CO.....	303-335-6325
	Jason Johnson.....	Centennial, CO.....	610-563-0151
Cracker Creek Family Farm.....	Jason Beutke.....	Brooker, FL.....	352-538-1547
Bowie Road Cattle.....	Robert Bowie Jr.....	Jacksonville, FL.....	904-304-3195
Family Tradition Farm.....	Ryan & Miranda Campbell.....	Pace, FL.....	217-825-3643
Dana Clarke.....	Dana Clarke.....	Monticello, FL.....	850-242-1094
Cummins Ranch.....	Ken Cummins.....	Vernon, FL.....	941-224-7494
Larry Ellis.....	Larry Ellis.....	Madison, FL.....	813-404-9894
Northwoods Cattle Ranch.....	Eric Eppley.....	Hillard, FL.....	904-718-8534
Lone Haven Livestock.....	Chad Haas.....	De Leon Springs, FL.....	386-748-9699
Turkey Creek Farm.....	Bobby Hall.....	Glen St Mary, FL.....	904-778-6912
Doug & Kim Hamilton.....	Doug Hamilton.....	Alva, FL.....	239-223-8867
Heritage Farm.....	Ed & Sandy Hathaway.....	Panama City, FL.....	850-819-5240
Seaside South Polls.....	Frank R Jones.....	Vernon, FL.....	850-866-2096
Renegade Hills Plantation.....	Clyde Keys.....	Odessa, FL.....	727-638-3078
Pine Hills Farm.....	Herbert Marlowe.....	Newberry, FL.....	352-262-9460
Pendergrass Farms.....	Jake & Marlon Pendergrass.....	Zolfo Springs, FL.....	863-781-5034
Lotus Hill LLC.....	Laura Phipps.....	Tallahassee, FL.....	850-933-8243
	Matt Rudmanyn.....	Ocala, FL.....	352-266-2762
Center Ring Farms.....	William Schreiber.....	Bell, FL.....	352-222-0215
	Jeffery Steadham.....	Mc David, FL.....	850-516-3047
North Florida Land Cattle.....	Will Thompson.....	St Marks, FL.....	850-566-6566
Underwood Farm LLC.....	Robin Underwood.....	Westville, FL.....	850-418-0566
Bee Lovely Farms LLC.....	Caroline Wetherington.....	Sarasota, FL.....	949-734-9200
Holiday Ranch South Polls LLC.....	Cliff White.....	Vernon, FL.....	850-260-1071
	Lance Alford.....	Madison, GA.....	404-392-8460
SB3 Farms.....	Daniel Barnard.....	Colquitt, GA.....	229-220-2025
	Cody Barnett.....	Bremen, GA.....	678-315-7946
Brewer Family Livestock.....	Chad & Camey Brewer.....	Hazelhurst, GA.....	912-539-0585
Rex Conely Farms.....	Rex Conley.....	McRae-Helena, GA.....	229-315-2115
Mill Shoals Farm.....	Robert & Bruce Davis.....	Bowman, GA.....	706-459-7398
Dennis Cattle Company.....	Jack Dennis.....	Greensboro, GA.....	706-816-0855
Rose Hill Farm & Cattle.....	Brooks Dickson.....	Elberton, GA.....	770-519-8567
Red Clay Land & Cattle Company.....	Kenneth Edwards.....	Shady Dale, GA.....	770-714-0915
Gaithers Keep Farm.....	David & Cindy Gaither.....	Rock Spring, GA.....	423-432-8417
Adabelle Cattle Company.....	Wayne Groover.....	Statesboro, GA.....	912-531-3100
Gwyn Farm.....	Sonny Gwyn.....	Zebulon, GA.....	770-584-5975
The Fancy Chicken Farm.....	Mark Harrison.....	Blakely, GA.....	561-762-8687
Hollow Rock Farm.....	Larry Holcomb.....	Ringgold, GA.....	423-593-3657
Nails Creek Cattle.....	Jeff Kise.....	Carnesville, GA.....	706-521-9362
Flat Woods Farm.....	John R Lane.....	Odum, GA.....	912-294-1955
Windswept Farms.....	Jason Linney.....	Bowdon, GA.....	678-378-5207
Athens 755.....	Larry Majerus.....	Gainesville, GA.....	770-861-0568
	Robert McBride.....	Rockmart, GA.....	404-275-0079
	Tim McCleery.....	Canon, GA.....	770-367-5177

CONTINUED ON PAGE 45

SOUTH POLL GRASS CATTLE ASSOCIATION MEMBERS, CONTINUED FROM 44

Head River Farms.....	Jay Miller.....	Lookout Mountain, GA.....	423-280-6027
Double R Farms.....	Randall Mullinax.....	Cave Spring, GA.....	678-850-1101
O'Neal Cattle Co.....	Wes O'Neal.....	Bremen, GA.....	770-206-0318
Carhan Farm.....	Tom Pearson.....	Eatonton, GA.....	404-210-9079
Happy Cows Farm.....	Fred Petrenko.....	Cedartown, GA.....	347-248-0568
B & P Cattle Company.....	Nathan Pool.....	Wrightsville, GA.....	478-697-0699
Cain Trail Farms.....	Bradley Ray.....	Jasper, GA.....	762-448-9328
New Thing Farm.....	Clayton Smith.....	Crawfordville, GA.....	470-239-1920
Thomas Family Farm.....	H. Greg Thomas.....	Carrollton, GA.....	770-317-4546
Thompson's Cattle Company.....	Buster Thompson.....	Loganville, GA.....	770-354-5404
GA Prime Cattle Company.....	Kyle Vaughn.....	Senola, GA.....	770-301-1909
	Jeremy Vinson.....	Cleveland, GA.....	706-892-5494
Flying W Farms.....	Kevin, Priscilla, Will Waters.....	Hazlehurst, GA.....	912-253-7156
	Jody Watkins.....	Woodstock, GA.....	678-994-5863
Yoder Brothers Farm.....	Mark Yoder.....	East Dublin, GA.....	478-278-6422
Triple E Farms.....		Kingston, GA.....	678-300-3463
Illum Cattle Company.....	Austin & Kelly Illum.....	Haverhill, IA.....	641-691-3899
Esher Cattle Company.....	Joel Moellers.....	Dubuque, IA.....	712-330-7923
Totemeier Cattle Company.....	Conrad Alycia Totemeier.....	New London, IA.....	319-931-8227
Apke Farms.....	Stephen & Kasie Apke.....	Beecher City, IL.....	217-821-0734
Barber Farms.....	Shawn Barber.....	Winchester, IL.....	217-299-2020
Bauman Family Farms LLC.....	Grant Bauman.....	Vienna, IL.....	618-927-3011
Brunenn Beef.....	Lucas Brunenn.....	West Point, IL.....	217-242-3615
	Christian Espindola.....	Deer Creek, IL.....	361-655-2978
Geczi Cattle Company.....	Wes Geczi.....	Liberty, IL.....	540-239-8166
TNT Farm.....	Troy Lohman.....	Butler, IL.....	217-556-2066
Millis Farms.....	Robert Millis.....	Anna, IL.....	618-697-6733
	Jon Mulcahy.....	Hampshire, IL.....	630-338-5280
3 Trees Ranch.....	Craig Smith.....	Marion, IL.....	618-996-8409
Whisper Wind Farm.....	Richard & Brandon Bailey.....	Centerpoint, IN.....	812-239-5325
Bedrock Farms.....	Mark & Wendy Carver.....	Marysville, IN.....	812-989-9383
Prudent Ranch.....	Mike & Marcia Gayso.....	Princeton, IN.....	812-779-6675
Loewen Cattle Company.....	Delwynn Loewen.....	Hardinsburg, IN.....	812-620-4720
Nolting Cattle Company.....	Harry Nolting.....	Vincennes, IN.....	812-881-1407
Slab Road Farm.....	Jason Owens.....	Austin, IN.....	502-812-0024
Perlich Family Farm.....	Phillip Perlich.....	Kendallville, IN.....	260-564-4874
Two Fifths Farm.....	Aaron Price.....	Bloomington, IN.....	812-361-4057
Azzitshudbe Farm.....	Steve & Marcia Provines.....	Auburn, IN.....	260-925-6522
Slabach Farms.....	Ivan Slabach.....	Shipshewana, IN.....	260-336-3175
Carter James Ranch.....	Robbie Ballard.....	Paola, KS.....	970-539-3575
	Jeff Cooper.....	Salina, KS.....	785-650-8168
Mad Farms.....	Jason Dagosta.....	Alta Vista, KS.....	785-210-7110
J And J Cattle.....	John Fischer.....	Ottawa, KS.....	785-418-8358
Better Earth Farms.....	Nathan Haskins.....	Overland Park, KS.....	913-488-6722
Double D Farms.....	Dusty Hunt.....	Kincaid, KS.....	785-448-8231
Miller Farm.....	Steve Miller.....	Wichita, KS.....	316-259-2377
Morrison Farms Inc.....	David & Beth Morrison.....	Salina, KS.....	785-493-4811
RL Ranch & Cattle Company.....	Brian Rasette.....	Frankfort, KS.....	913-638-4250
	David Sachse.....	Leavenworth, KS.....	402-880-1609
Schmidtberger Ranch LLC.....	Cole & Brittany Schmidt.....	Pratt, KS.....	620-660-8994
Cowskin Creek Cattle.....	Duane Seiler.....	Colwich, KS.....	316-648-0378
Jokers Wild Ranch.....	Caitlynn Stevenson-Salazar.....	Niotaze, KS.....	620-313-0202
The Stone Stag Ranch.....	Jason Stone.....	Wellington, KS.....	316-519-0528
	Tim Tyson.....	Parker, KS.....	913-898-2366
Earthwave Farm.....	Laila Alizadeh.....	Shelbyville, KY.....	502-380-7558
Cravo Farm.....	Bradley & Lindsey Aud.....	Whitesville, KY.....	270-314-5672
	David Bock.....	Marion, KY.....	270-790-7314
R&D Cattle Company.....	Robert & Donna Brown.....	Dixon, KY.....	270-836-6706
Farms Of Camelot LLC.....	James Cecil.....	Caneyville, KY.....	270-562-2502
Creech Cattle Company.....	Josh & Justin Creech.....	Corbin, KY.....	256-302-0463
Evans Family Farm.....	Jordan Evans.....	Morgantown, KY.....	270-999-1380
Split Acres Farms.....	Scott Falconberry.....	Richmond, KY.....	859-608-8067
Unity Farms.....	Nathan Hahn.....	Harrodsburg, KY.....	502-354-1920
Cherokee Farm.....	David Kelly.....	Lawrenceburg, KY.....	443-370-6530
Red Oak Farm.....	Mike & Carey Kennedy.....	Edmonton, KY.....	270-432-2703
Loy's Family Farm.....	Benjamin Loy.....	Shelbyville, KY.....	502-724-6154
Licking River Farm.....	Todd McClure.....	Falmouth, KY.....	859-654-1299

CONTINUED ON PAGE 46

SOUTH POLL GRASS CATTLE ASSOCIATION MEMBERS, CONTINUED FROM 45

Licking River Ranch.....	Pete Peterson	Hillsboro, KY.....	859-907-9917
Buck Creek Farms	Kenny & Carol Powell.....	Somerset, KY.....	307-286-8130
Roper Beef And Cattle Company	Caroline Roper.....	Marion, KY	270-704-6618
Wagoner Farms.....	Loran Wagoner.....	Cadiz, KY	270-836-1612
Redemption Creek Ranch	Cody Watson	Sharpsburg, KY	916-622-5060
Wengerds Regenerative Farms.....	Matthew Wengerd.....	Munfordville, KY	270-268-2889
Spade & Table Farm	Jeffrey Windhorst	Glasgow, KY	502-296-3228
Cherry Hill Farm	Dave Cherry	Rodessa, LA	318-465-3941
Credo Farms.....	Credo Farms.....	Covington, LA.....	985-867-6436
	Larry J Fontenot	Ville Platte, LA	337-360-1371
Creek Bottom South Polls	Nic Girgenti	Roseland, LA.....	985-517-8754
JG Ranch South Polls	Ja Girgenti	Amite, LA	985-517-8559
Breezy Acres Farm.....	Darrick Gutting	Leesville, LA	907-987-4421
Hebert Cattle Company.....	Mason Hebert.....	Welsh, LA	337-387-9640
	Dewayne Hendry	Winnsboro, LA	318-541-0031
Smoldering Oak Farms.....	Brent And Deedee Ingvarlsen	Pelican, LA.....	318-751-6629
Angelus Acres LLC.....	Jeremy Leblanc	Dry Creek, LA	253-213-6897
	Drew Lege	Erath, LA	337-523-7141
Coyote Cattle Company	Robby Royer.....	Denham Springs, LA	225-328-0458
P Scalisi Farms	Paul Scalisi.....	New Iberia, LA	337-303-3639
Flyin S Ranch.....	Steven or Kim Smith.....	Oak Grove, LA	318-614-5570
	Gordon Tarver.....	Hineston, LA.....	337-396-0443
4th Quarter Ranch	Stoney Ware	Roseland, LA.....	504-669-5100
Gelder Farm	Robert Gelder	Havre De Grace, MD	443-996-8451
Swain Ag Enterprises.....	David Swain, Grace Garst	Taneytown, MD.....	240-343-8300
Thousand Hills Farm.....	Adam Sisler	Oakland, MD	304-288-9925
Burt's Beef LLC.....	Will & Jessi Burt	Lake Odessa, MI.....	517-803-9540
Serenity Acres	Jeff Hopkins	Sheridan, MI.....	616-232-5460
Double K Reserve	Jim Kandell	Jerome, MI	517-812-3029
Red Leg Farms	Annie Rodgers	Montrose, MI	989-820-4153
Oliver Amick	Oliver Amick	Cabool, MO	
	Clem Amick	Houston, MO.....	417-967-2671
Bracken Ridge Farm	Matt & Teri Arthur	Marshfield, MO	417-241-1838
Austin Land And Livestock	Philip Austin	Linn Creek, MO	573-286-5478
Bachmann Ag LLC	Mike Bachmann	Perryville, MO	573-846-8515
Bardot Family Farm	Roger & Wendy Bardot	Lonedell, MO	636-358-2787
Bartimus Family Farm.....	Matthew Bartimus	Butler, MO	660-200-5936
Farm On The Hill	Justin Baty	Aurora, MO	417-846-6767
Becker Farms	Cliff Becker	Popular Bluff, MO	573-222-7109
Bear Branch Farm	Rick Bergthold	Perry, MO	573-721-4126
South Fork Farm	Randy or Keith Bergthold.....	Perry, MO	573-473-8476
	Keith Bergthold	New London, MO	573-231-1163
Maplewood Acres.....	Matthew Boatright	Sedalia, MO	660-620-4678
Good Life Grass Farms.....	Adam Boman	Pierce City, MO.....	417-693-3492
Bowman Ranch	Steve Bowman	Nixa, MO	253-509-8896
Hideaway Acres	Ron & Cindy Bracht	Mexico, MO.....	573-721-1470
Omega Ridge South Polls	Dennis Davis, Ty Kirchner,		
	Bryant Davis.....	California, MO	660-492-3545
Indian Creek Farm	Devon Byler	Cole Camp, MO	660-723-4776
Rafter C Ranch LLC.....	Shan & Sherry Christopher	Polo, MO	816-519-8512
Coleman Farms.....	Ben Coleman	Callao, MO	660-768-5743
Cox Family Farm	Ashley Cox	Rocheport, MO	573-999-6009
Lone Pine Farms.....	Joel & Sheila Cravens.....	Hartville, MO.....	417-464-5630
Lone Pine Farms.....	Rodney Cravens	Hartville, MO.....	417-464-7071
Southeast South Poll.....	Josh Creech	Mountain Grove, MO.....	402-750-1655
GCF Ridgerunner Farm	Rita Cullison	Mt. View, MO	719-930-7779
New Grove Cattle Co.	Nathan Culver	Hartville, MO	417-531-2622
Curry Farms	Seth Curry	New Bloomfield, MO	636-359-1494
Kavis Farms.....	Travis Curtis	Cameron, MO	816-668-1843
Danahy Farms.....	Derek Danahy	West Plains, MO	417-372-3597
Fechtel South Poll.....	Mark Fechtel, Danny Fechtel	Westphalia, MO.....	573-690-5380
RNH Rustic Ranch.....	Richard & Hayle Daughterty	Bland, MO	573-466-1125
Three Hills Estate.....	Marty Davis.....	Climax Springs, MO.....	573-286-1130
Dean Ranch	Jason Dean.....	Crane, MO	417-830-0131
55 Cattle Co	Bob & Ann Demerath	Mountain Grove, MO.....	417-967-4834
High Prairie Pastures	Derrick Derfus	Seymour, MO	952-261-4709
Dougherty Farms	Will Ciera Lisa Dougherty.....	Williamsville, MO	573-840-4123

CONTINUED ON PAGE 47

SOUTH POLL GRASS CATTLE ASSOCIATION MEMBERS, CONTINUED FROM PAGE 46

Red Oak Springs Farm.....	Robert Eisterhold.....	Jefferson City, MO.....	573-680-4594
Erickson Cattle Company.....	Josh Erickson.....	Cameron, MO.....	816-719-5403
Farrell Family Farm.....	Mark Farrell.....	Milo, MO.....	573-397-1386
Finan Farm At Flat Creek LLC.....	Mike & Liz Finan.....	Cassville, MO.....	417-846-5672
Rocking Horse Livestock.....	Mike Foate.....	Grovestspring, MO.....	417-462-0158
	Robert & Rebecca Forest.....	Knob Noster, MO.....	660-233-3322
Forsythe Family Farms.....	Martin Forsythe.....	Kidder, MO.....	816-617-1390
Woods Fork Cattle Company LLC.....	Steve & Judy Freeman.....	Hartville, MO.....	417-254-0913
Joseph & Hilary Frescoln.....	Joseph & Hilary Frescoln.....	Mountain View, MO.....	724-613-2767
Carson Hill Farms.....	Steven & Shelly Fuchs.....	Mill Spring, MO.....	573-998-2443
	Wilbur Graybill.....	Purdy, MO.....	417-737-9251
Grier Farms.....	Marvin Grier.....	Rogersville, MO.....	417-839-0108
Grimms Farm Tails LLC.....	Robert Grimm.....	St. Clair, MO.....	636-744-4713
Ozark Hills Genetics.....	David Hall.....	West Plains, MO.....	417-256-0813
Green Cow Farm.....	Dan Halley.....	Macon, MO.....	660-353-9881
Joholer Ranch.....	John Hammons.....	Smithton, MO.....	660-473-2444
Harrison Valley Farms.....	John & Kim Harrison.....	Fulton, MO.....	573-590-0643
Round Rock Ranch.....	Dave Haubein.....	Lockwood, MO.....	417-437-4118
Hausner Farm.....	Steve Hausner.....	Rolla, MO.....	573-368-8325
Hess Cattle Company.....	Wayland Hess.....	Harrisonville, MO.....	816-898-3304
Bull Skin Ranch.....	Michael Hobbs.....	Neosho, MO.....	417-592-9327
Finish Well Farms.....	Jean Hobbs.....	Neosho, MO.....	
County Line Acres.....	Chayla Hoffman.....	Mexico, MO.....	573-975-0886
	Joe Hoyt.....	Thayer, MO.....	417-280-6520
Pigeon Creek Farms.....	Josiah Hughes.....	Mansfield, MO.....	417-554-2383
Blisard Farms.....	Marie Iiams.....	Aurora, MO.....	417-846-6835
	Brian Stanton, Jason Jackson.....	Nixa, MO.....	626-825-0351
	Brandon Juergensmeyer.....	St Elizabeth, MO.....	573-619-0433
Amazing Grace Farm.....	Carolyn Kelley.....	Poplar Bluff, MO.....	623-640-8694
Mini Acres Farm.....	Bryce & Megan Kramer.....	Morrison, MO.....	573-680-9961
Better Pasture Farm.....	Preston Laub.....	Humansville, MO.....	417-808-0802
Lonesome Ridge Ranch.....	James & Carolyn Leinbach.....	California, MO.....	660-489-2424
Best Life Farm.....	Roy Libbert.....	Meta, MO.....	573-821-5143
Cedar Creek South Polls.....	Daniel Luehrs.....	West Plains, MO.....	417-855-0013
Maggard Mountain Farm.....	Lee Maggard.....	Oldfield, MO.....	417-543-2705
Marquart Farms.....	Lee Marquart.....	Bland, MO.....	314-602-4470
Marsh Farms.....	Jim Marsh.....	Oak Grove, MO.....	573-353-1637
316 Ranch.....	Jack & Alissa Mattingly.....	Stark City, MO.....	417-342-2956
Sunshine Family Farm.....	Ronald McCall II.....	Hartville, MO.....	503-949-5754
	Thomas McCormick.....	Norwood, MO.....	727-807-0600
Indian Creek Farms.....	Brandon Mebruer.....	Linn, MO.....	573-6444-326
Short M Ranch.....	Brad & Lindsey Metzner.....	Green Ridge, MO.....	660-221-4226
Miller Family Farm.....	Ethan Miller.....	Columbia, MO.....	573-682-7476
Miller Land & Livestock LLC.....	Nathan Miller.....	Monroe City, MO.....	573-470-1448
Miller Meadows.....	Darrell Miller.....	Annapolis, MO.....	573-330-7147
Mooneyham Farms.....	Rick Mooneyham.....	Pottersville, MO.....	928-486-4822
M6 Ranch.....	Marcus Mueller.....	Sikeston, MO.....	417-270-0662
Tyler Mungle.....	Tyler Mungle.....	Patton, MO.....	757-297-9036
Our Farm.....	Galen Murphy.....	Archie, MO.....	816-206-6334
Cloverleaf Farms.....	Doug Nichols.....	Marshall, MO.....	314-605-3475
Show Me South Polls.....	Caleb O'Neal.....	Rogersville, MO.....	417-880-9406
Shepherd Hill Farms LLC.....	Kurt Osborn.....	Vanzant, MO.....	303-905-3921
FP Ranch.....	Fedeles Paccione.....	Theodosia, MO.....	623-670-2442
Rinne South Polls.....	Roger Rinne.....	Higginsville, MO.....	660-238-5476
Ritter Farms.....	Adam Ritter.....	Climax Springs, MO.....	573-836-2770
J Roderick Cattle Company.....	Jay Roderick.....	Halfway, MO.....	417-328-8974
Sambro Farms.....	Dennis & Carol Sammet.....	Beaufort, MO.....	314-808-0846
Sassafras Valley Ranch.....	Bruce Shanks.....	Belle, MO.....	573-578-3945
Forward T Farms.....	Jeff Shefchik.....	Norwood, MO.....	920-265-0406
3 Suns Valley Ranch.....	Kyle Shirley.....	Dixon, MO.....	573-528-1799
Wild Cow Ranch.....	Matthew & Jamie Skaggs.....	Bunker, MO.....	573-466-9168
Francis Starke.....	Francis Starke.....	Bonnotts Mill, MO.....	573-418-8282
Starke Farms.....	Alex Starke.....	Higginsville, MO.....	660-641-1990
Stillwell Farms.....	Scott Stillwell.....	Houston, MO.....	417-254-0277
Rivendelle Farm LLC.....	Raymond Stoltzfus.....	Stockton, MO.....	417-599-2283
Thousand Hills Ranch.....	Allan Stoltzfus.....	Stockton, MO.....	417-599-9782
Mikee's South Polls Farm.....	Mike Thibault.....	Adrian, MO.....	816-297-4184

CONTINUED ON PAGE 48

SOUTH POLL GRASS CATTLE ASSOCIATION MEMBERS, CONTINUED FROM PAGE 47

Lost Creek Ranch	Tim Thomas	Salem, MO	573-453-0371
Acres To Graze Farm	Joanna Thompson	Doniphan, MO	607-379-4929
Underwood Spring Farms	Jared Underwood	Thayer, MO	417-848-4139
Vahl Farms LLC	Joshua Vahl	Elkland, MO	417-234-5313
D Rocking T Land And Cattle Company	Robert Verrall	Pomona, MO	484-880-3256
Voss Land & Cattle Co. L.P	Ralph Voss	Linn, MO	573-694-1682
WW Farms	Greg & Cody Weeks	Pomona, MO	417-255-3801
Whitman Cattle	Josh Whitman	Cuba, MO	636-206-9773
Wilbers Farm	Mike Wilbers	Bonnots Mill, MO	573-821-6235
Zahn Farms	Brian Zahn	Elkland, MO	417-719-7517
R&C Farm	Ron & Chanda Zahner	Willard, MO	417-844-0616
Old Brick Barn Ranch	Shelton Zeiset	Queen City, MO	660-216-3697
Zoom Daddy Beef Co LLC	Drew Zimmer	Odessa, MO	405-328-4345
Rock N J Farms	Jamie Aultman	Sumrall, MS	601-270-6972
AC Farms	James Bailey	Olive Branch, MS	901-212-0860
Big Valley Farms	Danny Broome	Sumrall, MS	601-270-0608
Carr Farm	JL Carr	Water Valley, MS	662-714-6902
Circle Creek Farms	Richard Creekmore	Union, MS	601-575-3649
Rolling Creek Farms	Joey Daugherty	Quitman, MS	601-479-1442
Old Place Farms	Bo Davis	Bailey, MS	601-479-6643
Cool Creek Farm	Davis Edwards	Brandon, MS	601-506-1915
Windsor Farms	Charles Freeman	Summit, MS	601-248-7399
179 Ranch	Jaye Germany	Madison, MS	601-604-4273
Hillman Farms	Brandon Hillman	Little Rock, MS	601-616-5014
Looxahoma Cattle Company	Dr Mark Holliman	Germantown, MS	901-335-3467
Hunt Hill Cattle Company	Cooper & Katie Hurst	Woodville, MS	225-907-4888
Free Forage Farm	Vance Koehn	Crawford, MS	662-574-7834
Dozier Road Cattle Company	Tim Koen	Scooba, MS	601-480-6796
Flat Rock Cattle Company	Richmond Lachney	Madison, MS	601-416-9780
Red Maple Cattle Company	Brock Maples	Flora, MS	601-573-6588
Longview Farms Inc	Glynn McLeod	Brandon, MS	601-942-8326
Raining Grace Farm	Brad & Melissa Newell	Meridian, MS	601-481-5439
Robinson South Polls	Kurt Robinson	Hernando, MS	901-230-2252
Buck Creek Farms	Hunter Scarborough	Ovett, MS	601-498-2435
GRD Timber Farm LLC	Sidney & Terrie Whitehurst	Iuka, MS	662-279-9622
RLW Farms	Ryan Wilkins	Lucedale, MS	251-776-2969
Beargulch Cattle	Mitchell King	Harlem, MT	406-399-3472
Lonesome Wind Ranch LLC	Paul Stoltzfus	Roberts, MT	406-425-4072
Feanix Biotechnologies	Mitchell Angove	Asheville, NC	814-779-2902
Belflower Farm	Jeff Belflower	Bostic, NC	828-980-5715
Mighty Oak Cattle LLC	Ronald "Trey" Brasswell III	Nashville, NC	252-904-3625
	Justin Bullock	Oxford, NC	919-530-0662
	Wade Burgess	Seagrove, NC	336-879-5320
Keat Farms	Tommy Burns	Angier, NC	910-658-7107
Hurricane Branch Farms	Taylor Newton, Casey Webb	Fountain, NC	252-227-9098
Pocket Creek Farm	Stephen Davidson	Sanford, NC	910-850-5228
True Cut Ranch	Fred Falcone II	Claremont, NC	980-215-4114
Patriot Farms LLC	Jason & Amanda Gordon	Denton, NC	336-687-3656
Dark Branch Farms	Adam Grady	Kenansville, NC	910-284-2507
Harris Homeplace Farm	Mike Harris	Snow Camp, NC	919-704-6931
Wildwood Farm	Eddie Hildreth	Hamlet, NC	910-995-5615
Alan Jones	Alan Jones	Snow Camp, NC	336-639-1530
Laura B's Farm	Jerry Joyner	Waxhaw, NC	704-616-4286
Legacy Ranch	David Long	Richlands, NC	910-620-0959
Gar-Mac Dairy	Gary MacGibbon	Crouse, NC	704-798-4011
Copper Hill Farm	Mike Mazejka	Graham, NC	336-260-9259
BB Organic Farm NC LLC	Elissa Miller	Louisburg, NC	919-414-7753
	Tyler Parrott	Oxford, NC	919-482-9689
Gold Rock PFF LLC	Greg Perkins	Gold Hill, NC	704-960-6421
Prestwood Beef Cattle	Kim Prestwood	Lenoir, NC	828-320-7317
G&J Raper Farms	Garrett Rapper	China Grove, NC	704-798-0943
Double R Cattle Svcs	Ritchie & Beverly Roberts	Hillsborough, NC	919-949-8157
Swayback Branch Family Farm	Ernest Rosser	Littleton, NC	252-822-2218
Red Truck Cattle	Randy Strickland	Asheboro, NC	540-435-7215
Busbee Road Farm	Caleb Wilson	Seagrove, NC	910-639-1093
Persimmon Ridge	Liz & Logan Parker, Woody Clore	Siler City, NC	336-251-3337
North Prairie Livestock Company	Bob Busch	Omaha, NE	402-616-7417

CONTINUED ON PAGE 49

SOUTH POLL GRASS CATTLE ASSOCIATION MEMBERS, CONTINUED FROM PAGE 48

Kunert Cattle Company	Josh Kunert	Unadilla, NE	402-269-6255
River Ridge Ranch LLC	Steven Tessari	Arlington, NE	713-882-6191
Burgess Family Farm	Coley & Tamsen Burgess	Loving, NM	575-200-7469
Green Hill Farms	John & Myria Denniston	Ripley, OH	937-515-0748
Dobbs Hill Farm	Mark Dobbs	Hillsboro, OH	937-763-8541
Dunham Homestead	Justin Dunham	Dayton, OH	937-340-1290
Tierra Verde Farms	Mike & Connie Jones	Deerfield, OH	330-614-6713
Beech Hollow	David Schlabach	Millersburg, OH	330-763-0735
Thomas Family Ranch	Lin Thomas	Urbana, OH	937-244-3879
Brass Tacks Ranch	Amy Traxler	Galion, OH	740-262-8160
Walnut Creek Farms	Kim Barker	Waynoka, OK	580-732-0244
Roll-Bar Ranch	Rollin Barnes	Vinita, OK	918-868-7259
Cross B Ranch & Cattle Company	Burt & Lori Berger	Stillwater, OK	215-415-5744
3B Ranch	William Blood	Mangum, OK	901-552-7925
Hope Cattle Company	Greg Buie	Copan, OK	918-766-2910
Carithers Family Farm	Tommy & Jamie Carithers	Dewey, OK	918-914-9079
Carte Cattle Company	Luke & Phillip Carte	Westville, OK	918-931-0737
	Robert "Stix" And Wyatt Graves	Adair, OK	405-226-9921
Guthery Cattle Company	Ryan Guthery	Carney, OK	405-370-8494
3J Farms Ok	Jennifer Hernandez	Blanchard, OK	405-596-0492
JSJ L&C LLC	Jeff Johnson	Vinita, OK	405-714-2894
Abbbc Farm	Aaron Jones	Tuskahoma, OK	620-330-6095
Clear Creek Abbey	Brother Joseph	Hulbert, OK	918-772-2454
Grazing Grace Cattle Company	Jeremy Jurena	Skiatook, OK	918-845-3512
Greenleaf Creek Ranch	Rebecca Klutts	Okemah, OK	918-650-5132
Green Acres Grassfed Livestock	Aaron Knepp	Bluejacket, OK	918-541-0355
Mackey Cattle Company	Brent & Robin Kolby	Copan, OK	918-440-5083
Ledbetter Family Farm	Chuck Ledbetter	Checotah, OK	918-759-3389
Good Road Ranch LLC	Bryan Lee	Chandler, OK	405-209-4787
Bar M Ranch LLC	Neil Moulin	Harrah, OK	405-517-5510
4M Ranch	Jamie Myers	Wetumka, OK	918-639-4462
Cardinal Cove Ranch	Sharol & Desi Nuckolls	Atoka, OK	817-658-5046
Aspen Cattle LLC	Reggie Palmer	Checotah, OK	918-408-2750
Hayson Ranch	Brent Paul	Poteau, OK	928-377-9793
Rebel Meadows Ranch	Daniel Perdue	Marshall, OK	603-380-1582
Phelps Diamond P Farms	Clinton Phelps	Tecumseh, OK	405-202-3285
M-P Farms	Michael Phipps	Copan, OK	469-767-2229
J & G Farm	Joe & Glenda Potteiger	S Coffeyville, OK	918-255-6508
Cotton Creek Cattle	Michael Provence	Copan, OK	918-914-2115
Rockwood Land And Cattle LLC	Wyatt Rockwood	Claremore, OK	918-710-8405
Pooler Creek Farms	Doug Rodgers	Copan, OK	918-440-1126
	Kim Ward Ron Cox	Duncan, OK	520-490-4424
Cattle Country Co	James Schapansky	Skiatook, OK	918-960-4977
Schultz Farms	Richard Schultz	Enid, OK	580-541-1203
Mossy Rock Farm	Brian Seitz	Colcord, OK	918-314-7860
Legacy Land & Livestock	Travis Smith	Durant, OK	903-421-4504
Rocking Bar S Farms	Joseph Smith	Adair, OK	918-530-9897
Snipes Land And Cattle	Justin Snipes	Dewey, OK	580-763-4206
Fly N Dutchman Ranch	Duane & Nanette Spyksma	Henryetta, OK	209-985-5757
Airborne Okie Ranch	Jim & Keriane Whatley	Boynton, OK	918-391-1502
Griffith Livestock		Chandler, OK	580-216-1932
Meadowlark Farm LLC	Scott & Jacqueline Allen	Corsica, PA	814-541-8550
The Farm	Bruce Balick	Cochranville, PA	302-983-3550
Wildwood Run Farm	Tyler & Hannah Beers	Corsica, PA	814-715-2357
Buck Run Land & Cattle	William & Helen Elkins	Coatesville, PA	610-316-3352
Heal Farms	Adam Mason	Apollo, PA	562-761-0588
Morgan Family Farm	Brett Morgan	Herminie, PA	412-432-9039
Great Meadows Sawmill & Farm	Matthew Nicholson	Farmington, PA	724-570-9415
Colton Parsons	Colton Parsons	Greenlane, PA	267-424-0236
Parsons Land And Cattle	Colton Parsons	Pennsburg, PA	267-424-0236
Sunshine Acres	Doug Pettit	Holbrook, PA	724-833-6921
Triple B Pastures	Robert Reighard	Mahaffey, PA	334-354-7577
East Ridge Farm	Donnie Horton, Brian Pittman	Heath Springs, SC	803-283-7281
Cypress Bottom Ranch	David Dobbins	North Augusta, SC	803-439-9544
Rolling Hill Ranch	Paul Epting	Mountville, SC	864-630-0152
Easy E Cattle Company	Ethan Foard	Jefferson, SC	843-672-8993
Three Belles Farm	Brian Gregory	Laurens, SC	864-684-4169

CONTINUED ON PAGE 50

SOUTH POLL GRASS CATTLE ASSOCIATION MEMBERS, CONTINUED FROM PAGE 49

Haley Quality Livestock LLC	Joel Haley	Chester, SC	803-487-5523
AP Sand Road Farm	Jeff & Dawna Hatcher	Bishopville, SC	678-863-6002
Vanmar Corner Ranch	Brian Holliday	Belton, SC	864-276-1364
Pompey's Rest	Patricia & Don Jackson	Ware Shoals, SC	864-861-3490
Clay Ridge Farm	Thomas Brubaker, Jonny Skrivse	Olar, SC	803-671-0329
Taproot Hills Farm	Michael Lee	Easley, SC	864-901-2270
	John McDaniel	Travelers Rest, SC	864-915-5646
Sparrow Ranch SC	Justin Poe	Lugoff, SC	803-540-6087
Grassy Haven South Polls	Brad Schulte	Woodruff, SC	864-494-5170
Triple Creek Farm	Ben Setzler	Newberry, SC	803-924-1626
Springdale Farm	Andre Wagler	Cross Hill, SC	864-941-0079
RH Acres	Ron Weaver	Myrtle Beach, SC	843-458-1461
Briar Creek Ranch	Jason Wenner	McConnells, SC	704-604-7863
TW Cattle Company	Wayne Wilson	Greenwood, SC	864-941-6236
Phoenix Farms	Joseph Ash	Cumberland Furnace, TN	661-330-0226
Opus Farms	Terrence Bailiff	New Market, TN	423-321-6520
Baker Farms	Danny Baker	Gordonsville, TN	615-486-1845
Bee Well Farm	Jill Baker	Columbia, TN	615-490-1593
Faith Valley Farm	Calib Bruce	Minor Hill, TN	303-549-1137
Bruner Farm	Greg Bruner	Belvidere, TN	706-264-3952
4 Bar C Ranch	A.J. Clark	Carthage, TN	615-473-0246
Green Acres Farm	Mike & Susan Clark	Rutledge, TN	865-389-5699
Smoky Mtn South Polls	Mike Clark	Rutledge, TN	865-389-5699
Warbonnet Farms	Alta Cutler	McEwen, TN	979-581-7676
Daniel Family Farm	Kevin Daniel	Collinwood, TN	931-676-7290
Robin's Nest Farm	Kyle Daniel	Rockvale, TN	
Dillard Farms	Troy & Lisa Dillard	Dickson, TN	615-202-5281
Liberty Hill Farm	Rhonda Davidson/ Dwight Tervilliger	Fairview, TN	615-587-8653
Flatt Farm	Mark Flatt	Loretto, TN	931-477-0263
Forkum Farm	Barry Forkum	Red Boiling Springs, TN	615-838-4118
Face To Face Farming	Gary & Diane Graves	Trenton, TN	731-663-4665
Rocky Top Farm	Terry Gupton	Crossville, TN	865-250-1418
Maple Valley Ranch	J. Allen Harris	Cumberland Furnace, TN	205-427-8488
Blue Sky Meadows	Mike Hillerbrand	Jonesborough, TN	336-448-9948
Picnic Tree Farm	Jon & Audrey Hornbuckle	Ethridge, TN	253-886-2446
Muddy Feet Farm	Aaron Klein	Columbia, TN	920-202-1259
Livesay Family Farm	Craig Livesay	Jonesborough, TN	432-220-7544
Fisher Farm	Micah Livingston	Darden, TN	731-733-1055
4M Farms	George Tyler Martin	Rogersville, TN	423-754-0191
Old Country Farm Meat Company	Dawn Minenna	Decaturville, TN	731-733-3094
RA Minton Cattle Company	Rob Minton	Springville, TN	731-697-5265
Aquarius Farms	Jamison Monroe	Nashville, TN	949-887-0242
Boone Farms	Michael Mulheran	Taft, TN	813-716-2854
Blackberry Hills Farm	Charles Owen	Cumberland Furnace, TN	931-801-7643
S & W Land And Cattle	Patrick Owens	Ramer, TN	662-808-7688
Preuett Grass Cattle Farm	Stanley Preuett	Troy, TN	731-446-1227
Rainy Knob Ranch	Randy & Holly Prosise	Loundon, TN	865-556-7548
Ramsauer Ranch	Robert Ramsauer	Jonesborough, TN	786-553-2166
R & R Farms	Josh & Elizabeth Richardson	Paris, TN	765-969-3683
Ruth Farm	Josh Ruth	Eidson, TN	321-507-0187
	Justin Sanders	Westpoint, TN	901-491-0183
Triple S Farm	Bill & Robin Shelton	Fayetteville, TN	931-607-8926
Six Stone Jars LLC	Chad Shields	Tazewell, TN	423-300-2869
Green Pasture Farm Hatchery	Merle Stoltzfus	Chuckey, TN	423-823-4599
Crossing Creeks Farm	Shane Stuart	Shelbyville, TN	615-767-6745
	John Abe Teague	Telford, TN	423-360-3336
Butterfield Farms LLC	William & Abby Terhune	Telford, TN	360-870-8807
Twin Springs Farm	Andrew Warf	Franklin, TN	615-504-0181
Washam Farm	Patrick & Tammy Washam	Dresden, TN	731-514-9508
Rock House Ranch	Laurie Albrecht	Fayetteville, TX	512-826-5550
Joaquin Farms	Roger Allen	Pasadena, TX	713-376-1453
Skyz The Limit Ranch LLC	Bill & Lisa Allen	Teague, TX	724-831-8208
	Bryan Arrington	Gilmer, TX	903-790-7855
Bekken Ranch	Jacob Bekken	Clifton, TX	713-647-1156
Kent Ranch	Kent Bell	Midlothian, TX	214-529-2525
Beverding Ranch	Stephen Beverding	Tomball, TX	281-620-7974

CONTINUED ON PAGE 51

SOUTH POLL GRASS CATTLE ASSOCIATION MEMBERS, CONTINUED FROM PAGE 50

5B Farm	Chris Bingham	Jacksonville, TX	318-505-5912
Brooks Family Farm	Lance Brooks	Yantis, TX	903-517-2586
5K Ranch	Kyle Brumfield	The Colony, TX	972-896-2540
Quinton Burkham	Quinton Burkham	Roundtop, TX	979-966-9667
Busy B Ranch	Matthew Burruss	Denison, TX	512-586-7366
Tranquil Meadows Farm	Douglas Calvin	Brenham, TX	832-236-3959
East Creek Cattle Co	Herman Dane Collette	Houston, TX	713-366-1648
Collins Country Farm	Chad & Tracy Collins	Alto, TX	936-366-6489
Connally Land & Cattle	Vickie Connally	Elgin, TX	575-706-6945
Corbello Farms	Cade & Devin Corbello	Kirbyville, TX	409-698-8918
Bar C Ranch	Joseph Cresswell	Axtell, TX	817-676-4607
Davis Farms	Kenny, Josie & Dustin Davis	Lagrange, TX	979-702-1258
L&b Cattle Company	Larry & Bitsy Dotin	Detroit, TX	214-415-3142
Eitel Valley Farms	James Eitel	Big Sandy, TX	903-841-1418
Ferguson Farms LLC	Walter Ferguson	Kennard, TX	713-828-1967
307 Land & Livestock	Ron & Paula Foland	Weatherford, TX	817-598-0886
4 G Farms	Jacoby Gentry	Paradise, TX	817-366-2138
Kelsay Creek Ranch	David Hartquist	Sweeny, TX	979-943-2052
Namesake Farm	Cooper Hayes	Troup, TX	512-995-8424
Made For More	Casey Hays	Canton, TX	719-271-6795
Wholistic Hills Farm	Brad Hemphill	Eustace, TX	480-200-1210
Terra Nera Ranch	Nathaniel Henderson	Timpson, TX	832-270-0239
Big Muddy	Daniel Hendrick	Whitehouse, TX	903-570-9715
Base Camp Farm And Ranch	Jarod Hogan	Rusk, TX	903-312-0883
Honnas Land & Cattle Company	Cliff Honnas	Bryan, TX	979-255-2132
	Garry Huckaby	Fort Worth, TX	817-929-8159
Running Double H	Don & Regina Hunter	Crosby, TX	713-875-3590
Clementine Cattle Ranch LLC	Mitchell Huntsman	Georgetown, TX	512-955-6050
Hoof & Hide LLC	J.R. & Kara Jones	Athens, TX	903-675-4419
	Wesley King	Pilot Point, TX	940-435-8654
Matthews Farms	Mike Matthews	Missouri City, TX	832-498-9885
Johnny Peek	Johnny Peek	Dawson, TX	972-822-4277
	Shannon Pickering	Brashear, TX	903-439-8436
Blue Duck Ranch	Matt Riley	Garwood, TX	409-739-8005
The Roddy Ranch LLC	Kyle Roddy	Tyler, TX	903-541-1998
710 Ranch	Thomas & Linda Roster	Sumner, TX	903-272-0032
Heritage Acres Farm	Brooks Rudolph	Yoakum, TX	361-208-2728
Solar Cows At White Horse Ranch	Mark Schimmel	Zephyr, TX	325-451-5148
Mark Schwind	Mark Schwind	Richards, TX	936-203-0003
Double S Ranch	Austin Smith	McCaulley, TX	714-349-6444
Stephenson Farms	Steve Stephenson	Cushing, TX	409-939-9273
M & L Farms	Matthew Stevens	Orange, TX	409-988-2572
Aquilla Valley Farm	Butch Tindell	Waco, TX	254-723-7277
Tromza Farms	Karen Tromza	Douglassville, TX	903-824-5750
Prairie Farmstead	Chuck Trowbridge	Sherman, TX	903-231-3748
Michael Vance	Michael Vance	Elkhart, TX	405-880-9960
Park Springs Farm LLC	Bryan Wall	Fort Worth, TX	817-851-3922
Enchanted Bull Ranch	Jeff Williams	Alpine, TX	432-360-5935
Wilson Ranch At Lost Creek	Joe Wilson	Hearne, TX	512-924-2433
Tishomingo Land & Cattle Company LLC		Hurst, TX	817-268-8000
Wind View Family Farm	Scott & Jessica Andrew	Fairfield, VA	540-319-9415
Windy Acres Farm	Dakota Blanks	Appomattox, VA	434-942-5210
Tallwood Farm	Scott Bledsoe	Stuart, VA	919-500-6915
JS Livestock LLC	Jason & Sheryl Bondurant	Martinsville, VA	276-340-2629
Pure Grass Farm LLC	Brian Bowen	Fincastle, VA	540-484-3799
	Andy Duke	Glen Allen, VA	804-640-7949
Twin Oaks Century Farm	John Everett	Danville, VA	434-429-1721
Bellows Branch Ranch	Robert Ferrell	Lynchburg, VA	434-841-6232
Bent Creek Farm	Marv Fisher	Prospect, VA	434-547-7593
Hidden Creek Farms	Sean Glass	Bentonville, VA	903-851-3578
Snowy Ridge Farm	Wayne & Idian Hall	Dinwiddie, VA	804-896-4883
River Rock Homestead	Keith Harrop	Swoope, VA	434-962-2285
Broad Spectrum Organics	Matt Haught	Elkwood, VA	540-764-2946
Garnet Grove Farm	Carlton Hensley	Woodford, VA	831-917-4350
Rapidan River Ranch	Tommy Hill	Madison, VA	434-882-0351
Greenway Beef	George And Julie Hudson	Dublin, VA	540-577-3211
Harmony Hill Farms	Earl Ingersoll	Scottsville, VA	434-286-7094
JTI Farms	Jesse & Taylor Ingersoll	Palmyra, VA	434-960-0319
Twiford Farms LLC	Kevin Jones	Oak Grove, VA	540-287-0425

CONTINUED ON PAGE 52

SOUTH POLL GRASS CATTLE ASSOCIATION MEMBERS, CONTINUED FROM PAGE 51

Buffalo Creek Ranch.....	Scott & Kathleen Kenney	Dillwyn, VA.....	703-447-2473
Highlawn Farm	Rosalyn Koontz.....	Esmont, VA.....	434-286-2798
1Tribe Farm	Travis Lacombe	Mount Sidney, VA	337-781-8749
Windy Hill Farm KPR Cattle LLC	Richard Magraw.....	Leesburg, VA	703-508-7850
Bingham Farm	Travis Maslen	Earlysville, VA.....	434-962-5667
	Dennis Miller	Greenville, VA	540-448-1136
	Wesley Nunley.....	Lebanon, VA.....	276-696-2560
Apple Horse Farms.....	William Pasco	Hot Springs, VA	540-958-1224
Chicory Hill Farm	Greg Paul	Powhatan, VA.....	804-339-2231
Kinloch Farms	Mike Peterson	The Plains, VA.....	540-272-5168
Gracie Hollow Farm	Justin Quesenberry	Woodlawn, VA.....	276-733-8783
Meridian Farmstead	Austin Rehl	Buena Vista, VA	740-710-9045
Easy Yoke Farm	Ryan Rodes	Bedford, VA	540-583-1596
The Flying S Farm.....	Michael Salka	Mt Jackson, VA	805-908-1200
Oakwood Farms.....	Karlin & Susan Schrock.....	Amherst, VA	434-221-9129
Smith Family Pastures.....	Daniel & Emily Smith.....	Pilot, VA	540-392-1598
Snyder Family Farm.....	Jeremy Snyder	Keysville, VA.....	804-677-0436
Ember Cattle Company	Becky Szarzynski Shaw	Fairfield, VA.....	540-461-0969
Little Creek Pastures	Aaron Taylor	Amelia Court House, VA	804-516-8137
Seven Fields Farm	Michael Verona	Hinton, VA.....	724-601-6323
Ararat Farm	Michael & Ginger Watson.....	Jonesville, VA	276-393-6347
Six Days Farm	Amanda & Justin Willis.....	Monroe, VA	434-316-8256
Witmer Cattle Company	Austin Witmer	Stanardsville, VA.....	540-205-7030
The Farm At Witts End	Kelly Witt	Stuart, VA.....	276-340-9803
Ellett Valley Beef Company	Guille Yearwood	Blacksburg, VA	540-320-0739
Hayou Farm	Adam & Allison Young.....	Staunton, VA	540-430-0696
Wandering Brook Farm	John Smith	Craftsbury, VT.....	802-279-3192
4Life Farms	Tom Wozney	Fountain City, WI	507-259-6010
Volcano Valley Farm.....	Daniel Dicks	Walker, WV.....	304-210-0936
Pine Draft Farm.....	Brian & Kelli Eglinger	Augusta, WV	304-257-8862
Haggerty Farm.....	Willie Haggerty III	Old Fields, WV	304-359-8421
Thompson Farm	Chris Hoagland	Alderson, WV	303-332-6399
	Jim Kemp.....	Belleville, WV	304-481-1763
Golden Farms LLC.....	Rob Whittington	Charleston, WV	304-988-9250



Josh Erickson (816) 719-5403
jerickson@iscbank.com

Brody Erickson (816) 634-7113

Erickson Cattle Company
7977 NE Witt Rd
Cameron, MO 64429
www.ericksoncattlecompany.com

**Producers of low input, rotationally grazed
South Poll replacement heifers, breeding
bulls and grass finished steers since 2011.**



Advertisers Index (listed alphabetically)

4th Quarter Ranch, Stoney Ware, Louisiana	12
Bent Tree Farms, Teddy Gentry, Alabama	2
Ember Cattle Company, Becky Szarzynski Shaw, Virginia	40
Erickson Cattle Company, Josh Erickson, Missouri	52
Grass Grazing Podcast, Cal Hardage, Oklahoma	32
Gwyn Farms, Sonny Gwyn, Georgia	17
Holiday Ranch, Cliff & Kay White, Florida	10
Honnas Land & Cattle Co., Cliff Honnas, Texas	20
Hoof & Hide LLC, Kara Jones, Texas	41
Lonesome Wind Ranch LLC, Paul Stoltzfus, Montana	24
Massey Ranch, Daniel Massey, Arkansas	28
Missouri South Poll Association, Diane Spurlock, Missouri	38
Moonlight Meadows, Bob Zogorski, Pennsylvania	3
Morgan Cattle Co., Blake & Kelsi Morgan, Alabama	21
Morrison Farms, Inc., David & Beth Morrison, Kansas	21
O'Neal Cattle Company, Wes O'Neal, Georgia	39
Ozark Hills Genetics, David Hall, Missouri	33
Providence Farm, Perry McChesney, Arkansas	29
Rolling Hill Ranch, Paul Epting, South Carolina	36
Rose Hill Farm & Cattle, Brooks Dickson, Georgia	29
Sassafras Valley Ranch, Bruce Shanks, Missouri	9
Schmidtberger Ranch LLC, Cole & Brittney Schmidtberger, Kansas	24
Smoky Mountain South Polls, Mike Clark, Tennessee	11
Southern Select Cattle, Paul Epting, South Carolina	16
Sumners Farm, Andy Sumners, Alabama	23
Unity Farms, Nathan & Ellie Hahn, Kentucky	35
Virginia South Poll group, Becky Szarzynski Shaw, Virginia	13
Voss Land & Cattle Company, Ralph & Jerry Voss, Missouri	37
Woods Fork Cattle Co., Steve & Judy Freeman, Missouri	3
Xpressions, Graphics Specialists, Gail Hardy, Missouri	25



South Poll Grass Cattle Association

526 County Road 370 • Elba, AL 36323

256-996-8355

Info@southpoll.com • <https://Southpoll.com/>

